

# The Thermal Background to Metamorphism - II: Simple Two-Dimensional Conductive Models

C. M.R. Fowler et E. G. Nisbet

Volume 9, numéro 4, december 1982

URI : [https://id.erudit.org/iderudit/geocan9\\_4art03](https://id.erudit.org/iderudit/geocan9_4art03)

[Aller au sommaire du numéro](#)

Éditeur(s)

The Geological Association of Canada

ISSN

0315-0941 (imprimé)

1911-4850 (numérique)

[Découvrir la revue](#)

Citer cet article

Fowler, C. M. & Nisbet, E. G. (1982). The Thermal Background to Metamorphism - II: Simple Two-Dimensional Conductive Models. *Geoscience Canada*, 9(4), 208-214.

Résumé de l'article

In a previous article simple one dimensional models of metamorphic conditions were examined. In this article more realistic two-dimensional models are set up, to show the metamorphic effects of burial, intrusion and thrusting. Models in which erosion takes place demonstrate the development of a metamorphic facies series and underline the importance of understanding regional stratigraphy in interpreting metamorphism.



## The Thermal Background to Metamorphism - II Simple Two-Dimensional Conductive Models.

C.M.R. Fowler and E.G. Nisbet  
*Department of Geological Sciences*  
*University of Saskatchewan*  
*Saskatoon, Saskatchewan S7N 0W0*

### Summary

In a previous article simple one dimensional models of metamorphic conditions were examined. In this article more realistic two-dimensional models are set up, to show the metamorphic effects of burial, intrusion and thrusting. Models in which erosion takes place demonstrate the development of a metamorphic facies series and underline the importance of understanding regional stratigraphy in interpreting metamorphism.

### Introduction

In the first of these discussions (Nisbet and Fowler, 1982) of the thermal background to metamorphism, we discussed simple one-dimensional problems, most of which were mathematically accessible to senior geology undergraduates. However one-dimensional models do not give an easy intuitive feel of the thermal constraints on metamorphism. In this article several two-dimensional problems are analysed. These are mathematically complex, but the results are much more easily grasped by the student, especially as most geologists are accustomed to thinking about strata in two dimensions. It is hoped that a study of these two-dimensional models will give some idea of the rates of thermal equilibration, and that they will give a qualitative understanding of the movement of heat. The intention of the models is to show how the various different types of metamorphic facies series come to be put together. All of the models discussed are conductive. In nature many metamorphic

rocks show evidence for transport of heat by fluids, but that problem is much more complex and not discussed here. We also make no allowance for heat produced or consumed by exothermic or endothermic metamorphic reactions. In some cases this will considerably change our models, but a full discussion of this is out of the scope of the present paper.

### Two-dimensional models

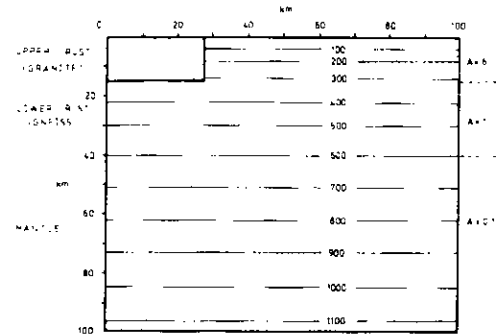
Metamorphism may be caused by a wide variety of thermal events; rocks have very different thermal responses to different tectonic events. The models are chosen to demonstrate a variety of possible metamorphic environments; they are by no means exhaustive or even representative of the possible range existing in the earth. Initially, we shall consider cases in which no erosion or deposition takes place, then we shall introduce erosion, since no metamorphic rock comes to be exposed on the surface without undergoing either erosion or tectonic accident. It can be readily seen from the discussion of the geotherm in the first article that erosion immediately has important consequences on the nature of the metamorphism itself, and on the metamorphic facies series eventually created.

### A. Non-erosional models

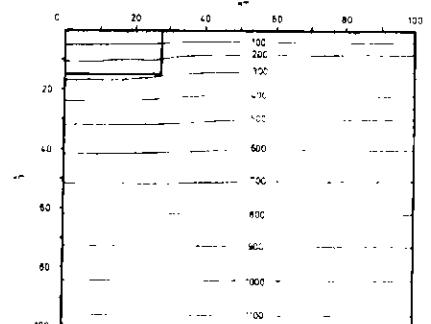
We take three models: a model of burial metamorphism; a model of intrusion in which we consider both basic and granitic intrusions, and a model of overthrusting.

**Burial metamorphism.** We have constructed a model of a "typical" burial terrain: this consists of a granitic country rock in which a rectangular trough of sediment has been deposited. Beneath both granite and trough is a gneissic continental crust, overlying the mantle. Figure 1a simply shows the standard physical parameters of the model. The model includes a 40 km thick crust; the conductivity throughout is  $0.006 \text{ cal cm}^{-1} \text{ }^\circ\text{C}^{-1}$ , initial temperature gradient is the equilibrium gradient in the granite, gneiss and mantle while the sedimentary trough is at  $100^\circ\text{C}$  throughout (this is an arbitrary value and only significant in the very early stages of equilibration of the model), and heat generation in the granite is  $6.0 \text{ h.g.u.}$ ,  $2.0 \text{ h.g.u.}$  in the sediment,  $1.0 \text{ h.g.u.}$  in the gneiss and  $0.1 \text{ h.g.u.}$  in the mantle. The model is analogous to a rapidly filled sedimentary basin surrounded by granitic crust; it is perhaps similar to a sedimentary trough formed on a continent above a subduction zone, or to an Archean greenstone belt filled with thick sediment and set in a granitic terrain.

Figure 1b shows how the model has evolved after 20 Ma. The sedimentary trough very rapidly equilibrates towards the temperature of the surrounding country-rock; after 1 Ma the base of the middle of the trough is at about  $250^\circ\text{C}$  and after 20 Ma it is at about  $270^\circ\text{C}$ , close to equilibrium, with a shallow-level gradient of about  $19^\circ\text{C/km}$ . The temperature in the sedimentary trough is thus very strongly influenced by the heat production in the surrounding granite. If the country rock had been mafic material rather than granite the equilibrium gradient would have been lower, as the heat generation of mafic rocks is lower than that of granites (see previous article).



**Figure 1a** Dimensions and physical parameters of the two-dimensional burial and intrusion models. As the problem is symmetrical, only half of the model is shown. Thickness of the sediment or intrusion (stippled region) = 15 km, half-width = 27.5 km. Surrounding terrain is initially at its equilibrium thermal gradient. Deep heat contribution  $q_m = 0.5 \text{ h.f.u.}$   $A =$  radioactive heat generation in h.g.u. For the burial model, initial temperature of the sediments is taken arbitrarily as  $100^\circ\text{C}$  and  $A = 2 \text{ h.g.u.}$  In the basic intrusion, initial temperature =  $1100^\circ\text{C}$  and  $A = 1 \text{ h.g.u.}$  In the granitic intrusion, initial temperature =  $700^\circ\text{C}$  and  $A = 10 \text{ h.g.u.}$   
 Note 1 h.f.u. =  $41.8 \text{ mWm}^{-2}$   
 $= 10^6 \text{ cal cm}^{-2} \text{ sec}^{-1}$   
 1 h.g.u. =  $0.418 \times 10^{-3} \text{ mWm}^{-3}$   
 $= 10^{-13} \text{ cal cm}^{-3} \text{ sec}^{-1}$



**Figure 1b** Burial model after 20 Ma.

Hence the temperature in the trough at 15 km would be 50° C to 100° C lower. The model thus clearly demonstrates the important control that the surrounding and underlying rocks exert on the P/T path of burial metamorphism. McKenzie (1981) presents a much more rigorous and realistic model of burial heating and oil maturation in sedimentary basins.

**Contact and Intrusion Metamorphism.** A second class of model may be constructed as the inverse of the first. In this family of models a large igneous body is intruded into a country rock, and then crystallizes and cools at high level (in contrast to intrusion at deep level which can be crudely modelled by increasing the deep heat contribution gm - see discussion of this in previous article). Two different types of intrusion may be considered - a basic intrusion which contains only small amounts of radioactive elements, and a granitic intrusion rich in these elements.

**Basic Intrusion.** The main parameters of this model are shown in Fig. 1a. A large basic intrusion at 1100° C, 55 km across and 15 km deep is emplaced to a high-level in a country rock of sediments and low-grade metamorphic rocks. The latent heat of crystallization, 100 cal/gm, is spread over a 1 Ma cooling interval. The situations after 1 and 20 Ma are shown in Fig. 2a, b. Clearly contact metamorphism is an important transient phenomenon, but what is also interesting is the relatively small effect the intrusion has some distance away from the contact at high levels. If intrusion is to be a major cause of regional, as opposed to local metamorphism, the intrusions must form a high proportion of the total rock pile.

**Granitic Intrusion.** With a granitic intrusion the problem is rather different; the initial temperature of the igneous body is lower, but the internal heat generation is greater. Thus there is less contact metamorphism but a greater long-term effect around the intrusion, where the eventual temperature is higher than in the previous case, for bodies of the same size.

The physical parameters of this model are shown in Fig. 1a, while Figs. 2c, d, e, and f show the evolution of the model after 1 Ma, 2 Ma, 5 Ma, and 20 Ma. In this case the same latent heat as before is spread over a period of 2 Ma. The top of the pluton cools rapidly, but the base of the pluton remains hot, partly because of the internal heat generation. This high basal temperature leads to a general raising of the temperature below and around the base of the pluton, to the extent that

eventually some local partial melting may take place in the country rock at depth below the intrusion; in other words, the intrusion itself can sometimes cause smaller further intrusion. If, for instance, the original intrusion were mantle-derived, it might cause later crustal anatexis. This would cause a geologist to find some very confusing field relations - at the top of the pluton "old" intrusive relationships and low <sup>87</sup>Sr/<sup>86</sup>Sr initial ratios would be seen; at the base of the pluton and below, "young" partial melting textures and high <sup>87</sup>Sr/<sup>86</sup>Sr ratios would be present; it would be very difficult indeed to unravel the time history of the rock.

During the period immediately after intrusion, hydrothermal convection cells are set up by the hot body, especially if the intrusion is in a relatively wet country

rock. These cells dominate the heat transfer process, so the simple conductive models considered here should only be regarded as rough guides to the real pattern of metamorphism. Convective heat transfer will tend to speed up the cooling, as heat is moved more quickly. Furthermore, it will tend to concentrate the metamorphic effects nearer the source of heat, as this is where convection is most active. In granites, internal heat generation may prolong the action of convective cells. The presence of water also has profound effects on the mineralogical course of the metamorphism. Nevertheless, the simple conductive model remains a useful guide to the general understanding of metamorphism around a pluton.

At depth the long-term metamorphic imprint of the granite body is greater

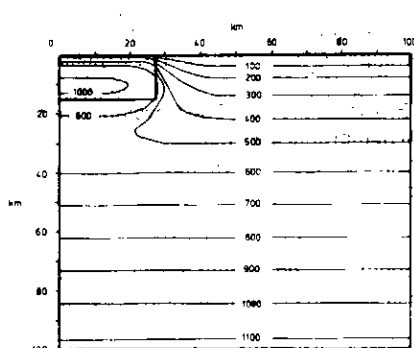
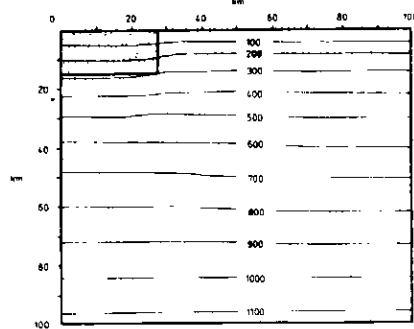
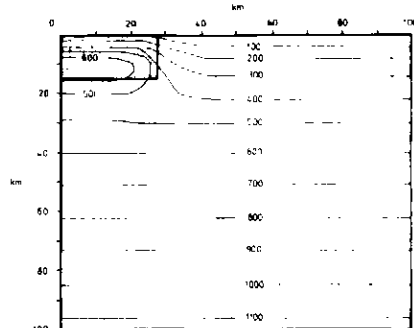


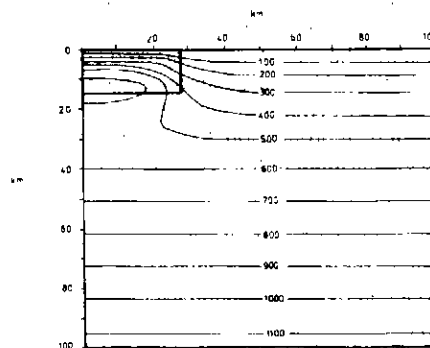
Figure 2a Basic intrusion after 1 Ma.



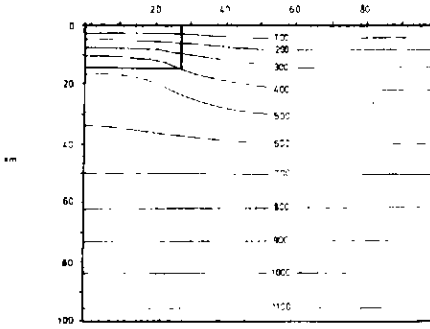
2b Basic intrusion after 20 Ma.



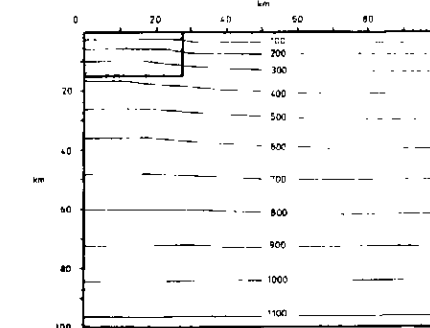
2c Granitic intrusion after 1 Ma.



2d Granitic intrusion after 2 Ma.



2e Granitic intrusion after 5 Ma.



2f Granitic intrusion after 20 Ma.

than that of the basaltic body. Whereas basaltic intrusion would have to form a significant proportion of the total rock pile to have a "regional" effect, slightly fewer granitic intrusions would be needed to produce a regional metamorphism in which the entire rock suite is significantly raised above its equilibrium temperature.

One further point may be made at this stage, though it applies generally to all regional metamorphism. As the rock pile heats up in response to some tectonic event and begins to melt at depth, the melt which forms will tend to be rich in those elements (K, Th, U) which produce the heat. Over time this process will effectively "scour" the deep crust of heat-producing elements and lead to a concentration of these elements in shallow-level intrusions (recognized as "late" or post-tectonic) and pegmatites, and eventually in sediments and seawater, after erosion. The net effect is a marked concentration of heat production in the top of the crust. Whatever the initial distribution of heat production, this will lead to the stabilization of the rock pile to a non-melting equilibrium.

**Thrust Models.** A wholly different type of metamorphism may be envisaged - that produced by overthrusting events (e.g. Niggli, 1970). Fig. 3a illustrates an example, with a large overthrust slice of granite-gneiss material emplaced over mafic rock. Real parallels include subduction zones or an area such as the Eastern Alps (Bickle *et al.*, 1975) where a thick overthrust crystalline block has produced metamorphism below it. In our simple model thrusting is instantaneous. Perhaps the most interesting feature of this model is that one thrusting "event" necessarily leads to two very distinct metamorphic "events". Immediately after thrusting (Fig. 3b) the hot base of the overthrust pile thermally reequilibrates with the cool underthrust rocks beneath. These latter rocks are very likely to have been rich in volatiles (e.g. spilites in a subducted oceanic slab) and thus very rapid retrograde metamorphism will take place in the upper slab, coupled with equally rapid prograde high pressure metamorphism in the lower slab. At the deeper end of the overthrust wedge local partial melting may take place if large amounts of volatiles move from the lower block into the hot lower crust of the upper block. This may produce granitic intrusions at high level.

The speed of the thermal reequilibration after thrusting should be stressed (Fig. 3b) - it is at first very rapid and "inverted" thermal gradients are probably

very short-lived except where a major heat source such as shear heating or exothermic metamorphism is present in the upper slab (Graham and England, 1976). The resulting geotherm in the thrust zone and below has a very small  $dT/dP$  of the order of a few  $^{\circ}\text{C}/\text{km}$ .

After initial reequilibration comes a long period (30-50 Ma or more depending on the size of the pile) in which a slow build-up of the geotherm takes place. This is a period of prograde metamorphism throughout the pile with the removal of water to higher levels during recrystallization. Finally partial melting takes place at the base of the pile and the heat production is redistributed until stability is reached.

Thus two metamorphic events may be distinguished: a very early and rapid retrogression in the upper slab and progression beneath, followed by slow progression throughout and finally partial melting and "late" intrusion to high level.

### B. Erosional Models; The Development of a Metamorphic Geotherm.

Any metamorphic rock must undergo erosion if it is to become exposed at the surface (or else it must be exposed by tectonic disruption, which can be thought of as equivalent to fast erosion). Thus erosion is essential to produce a metamorphic belt. However it can be seen from the above discussion of the geotherm in the previous article and from the work of England and Richardson (1977) that the process of erosion itself has a fundamental effect on the structure of the geotherm, and the P/T path through which any metamorphic rock passes is to a large extent controlled by erosion. Secondly England and Richardson pointed out that the "metamorphic geotherm" - the geotherm inferred by the Pressure and Temperature measured in metamorphic rocks exposed at the surface - is polychronic and strongly influ-

enced by the erosion path followed by the rocks. We discuss this further below.

Miyashiro (1973) has introduced the concept of a "metamorphic facies series" to represent the series of metamorphic facies observed in a single metamorphic terrain. For the purpose of this paper we shall define a metamorphic facies series as the curve in P/T space obtained when P/T data from metamorphic rocks from a single coherent tectonic/metamorphic terrain are plotted together. In many metamorphic terrains relict minerals from an earlier event may also exist - these would be expected to give a different curve since the P/T conditions of metamorphism and the erosional history of the earlier event would be unlikely to

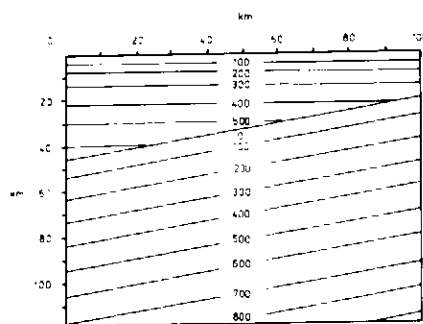
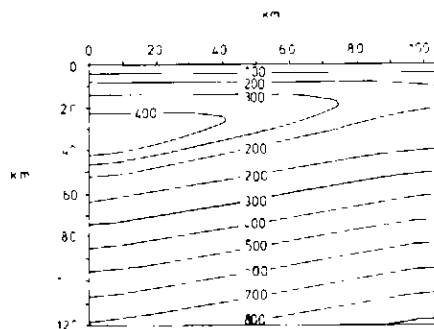


Figure 3a Overthrust model - initial conditions.



3b Overthrust model after 1 Ma.

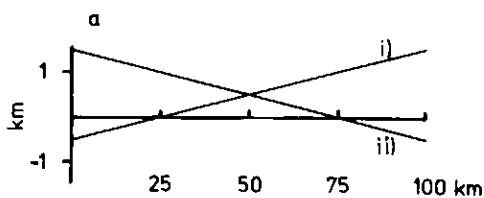
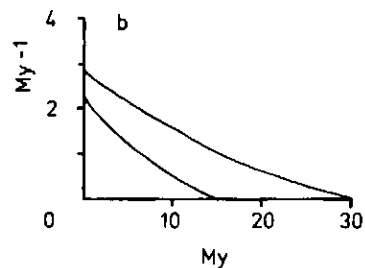


Figure 4 Erosion functions. At any particular time and place, rate of erosion  $U = (\text{space function}) \times (\text{time function})$  in  $\text{km}/\text{Ma}$ .

4a Space function across the burial and intrusion models. Two cases were considered: i) erosion of the country rock and deposition upon



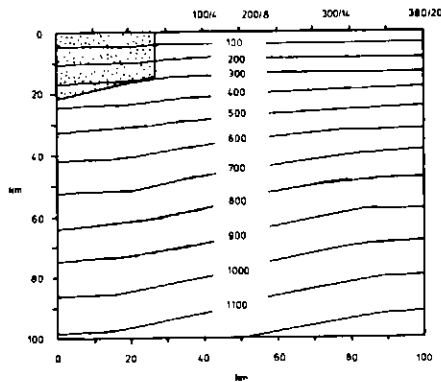
the sediments or intrusion; ii) erosion of the sediments or intrusion and deposition on the country rock. In the overthrust model erosion is constant in space across the model.

4b Time function. Lower curve: burial and intrusion models, Upper curve: overthrust model.

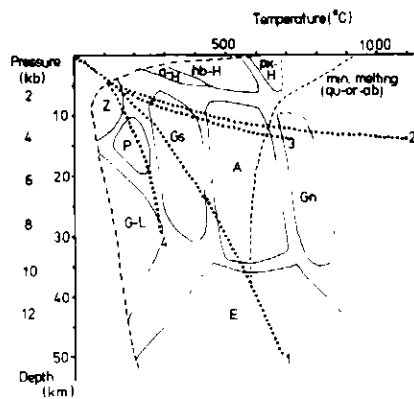
be exactly similar. We should like, however, to emphasize the non-unique character of thermal equilibration; a similar end result may be obtained by a variety of different paths.

We shall now examine the various thermal models of the previous section to see how they are influenced by erosion. The erosional model chosen for the burial and intrusion models is as follows:

1) In space across the 200 km model we have considered both strong erosion at the margins and deposition in the centre; and also strong erosion at the centre and deposition on the margins. In both cases



**Figure 5** Burial model after 20 Ma of erosion of country rock and deposition upon sediment trough. Figure shows maximum temperature ( $^{\circ}$ C/depth (km)) attained for rocks now exposed at the surface after 20 Ma. The depth/temperature paths followed by these samples are the same as those shown in Figure 7a.

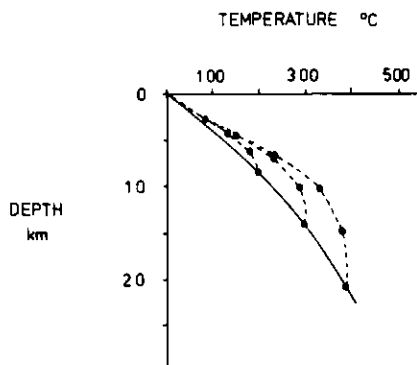


**Figure 6** Pressure/Temperature curves (Metamorphic facies series) obtained from exposed rocks in the models after erosion (see Figs. 5, 7, 8). Dotted lines show facies series. 1) equilibrium series (Figs. 5, 7a, 8-high grade); 2) basalt intrusion after erosion (Fig. 7b); 3) granitic intrusion (Fig. 7c); 4) overthrust model - low grade (Fig. 8). Facies fields after Turner (1968). Z = zeolite, P = prehnite-pumpellyite, G-L = glaucophane-lawsonite, Gs = greenschist, A = amphibolite, E = eclogite, Gn = granulite, a-, hb-, px-H = albite, hornblende and pyroxene hornfels.

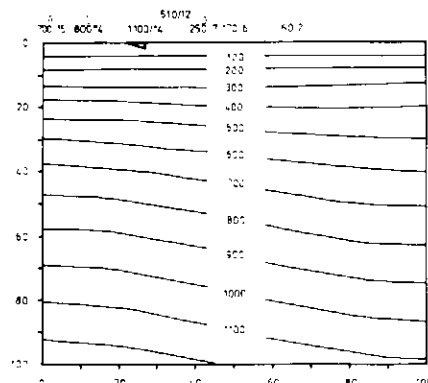
the erosion rate varies linearly across the model (see Fig. 4a); 2) In time we have chosen an exponential function, erosion rate decaying as  $e^{-t/15}-e^{-1}$  for 15 Ma, where t is in Ma. This is shown in Fig. 4b.

In the case of the thrust model we have chosen different erosional constraints; an initial erosion rate of 2.8 km/Ma across the whole model, decaying in time as  $e^{-t/30}-e^{-1}$  (t in Ma.)

**Burial model with Erosion.** As a simplest case we consider the "burial" trough of sediment, and continue to deposit in the middle of the trough at an initial rate of 1.1 km/Ma while eroding at the edge of the model at an initial rate of 3.3 km/Ma; the rate of erosion and deposition falling off with time as described above.

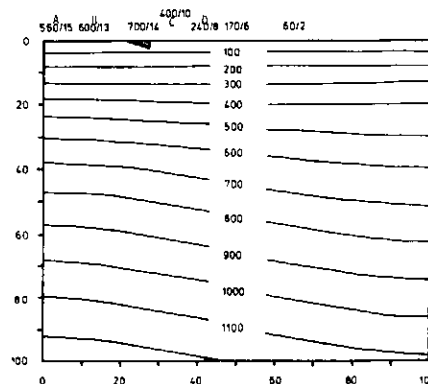


**Figure 7a** Temperature-depth paths followed by points finally exposed at the surface, for intrusion and sedimentary trough models with subsequent erosion of country rock and deposition on intrusion/trough. Starting equilibrium gradient - solid line. Circles - temperature every 2 Ma for first 6 Ma of erosion.

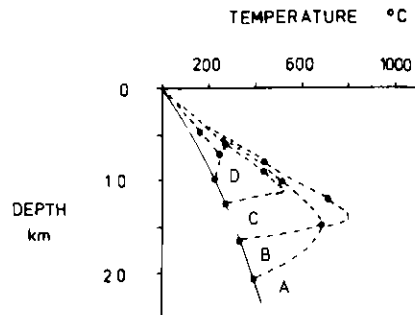


**7b** Basalt intrusion model after 20 Ma of erosion of the intrusion and deposition on the country rock. Stipple shows the remnant of the intrusion.

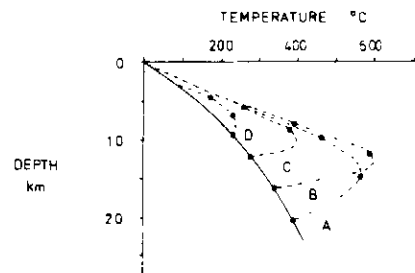
The result is shown in Fig. 5, which reflects the state of the rock pile after 20 Ma. By this stage the burial trough has been further covered by sediment, while in the country rock deep erosion has taken place, to a depth of 15-20 km at the edge of the model. Fig. 5 also shows the maximum temperatures attained during the 20 Ma time period (i.e. 15 Ma of erosion/deposition and 5 Ma of thermal reequilibration) by the rocks which are



**7c** Granitic intrusion (see Fig. 2c) after 20 Ma of erosion of the intrusion and deposition on the country rock. Stipple shows the remnant of the intrusion. In Fig. 7 numbers above models give the maximum temperature ( $^{\circ}$ C) attained by rocks now exposed at the surface, and the depths (km) at which these temperatures were reached.



**7d** Temperature-depth paths for basalt intrusion of Fig. 7b.



**7e** Temperature-depth paths for granite intrusion of Fig. 7c.



pressure, low temperature event in the underthrust rocks, shown as Facies series 4 in Fig. 6.

An overthrust of the dimensions modelled here would thus produce the classic "paired metamorphic belts"; one high grade (Facies series 1) and one low grade (Facies series 4). Much smaller overthrusts (e.g. at high tectonic levels in mountain belts) would be qualitatively similar, but the metamorphic effects might be restricted by kinetic factors or else small or difficult to distinguish.

The time at which the rocks in the overthrust pile attain their maximum temperatures depends on their original depth and on erosion rates; thus radiometric ages would probably show a significant spread.

#### Radiometric ages

The age of a radiometric system, such as a mineral, generally depends on the way in which the daughter product became sealed into the system as it cooled. In a typical system a "blocking" temperature exists - this is the temperature below which the system can be thought to be closed (Dodson, 1973). Different minerals, different dating techniques and different rates of cooling all produce different blocking temperatures; thus we have here a very powerful tool for working out the thermal history of a mountain belt.

Harrison *et al.* (1979) and Harrison and Clark (1979) have attempted to use this tool in the interpretation of a pluton. For moderate cooling rates they suggested the following closure temperatures: 94° C for apatite fission tracks, about 175° C for zircon fission tracks, 177-260° C for biotite K/Ar, and 400-550° C for hornblende K/Ar. Sm/Nd and Rb/Sr whole rock ages in many cases probably reflect the original age of the rock. Consider first the basaltic and granitic intrusions illustrated in Fig. 2. Underneath the intrusion, minerals which "close" around 500° C would have their radiometric clocks started about 1-2 Ma after the start of cooling. In contrast, minerals which "close" at around 300° C would not start recording until 20 Ma in the case of the basalt intrusion, which has little internal heat generation. In the case of the granite a mineral with a 300° C blocking temperature would not close at all underneath the intrusion.

The depth/temperature paths shown in Fig. 7 are of great interest, in what is essentially a simple case of the variable erosion of an equilibrium geotherm. Note the great spread in radiometric ages that would be obtained from different mineral 'clocks'. Furthermore, the blocking temperatures are dependent on rate of cooling, which is different in each case.

In Fig. 8 we show the effect of using these various dating techniques across our thrust model's 30 Ma erosion surface - the dates shown are the dates that would be measured by a geologist working on this surface. It can be seen that the dates provide a very useful tool indeed for studying the cooling and erosional history of the pile. The model involves rapid erosion of the overthrust pile; in many natural examples there may be profound differences in closure ages of minerals which were initially produced by the same tectonic event.

#### Implications

Most regional metamorphism is probably connected in some way to subduction, but the immediate controlling process of metamorphism in any particular terrain is likely to be an event such as intrusion or thrusting. To interpret a metamorphic terrain fully it is not sufficient to know the P/T conditions undergone by the rocks: a full interpretation of the thermal history of the rocks also involves studying the erosional and radiometric history of the terrain. Our thermal models demonstrate that a *general* knowledge of the stratigraphy of an area is essential before its metamorphic study can be properly unravelled.

Convective movement of fluid has not been discussed in these models, yet it is a very major factor in heat transport around plutons, and during dehydration of overthrust terrains. As a rough general rule fluid movement speeds up thermal reequilibration, and reduces to some degree the extent of aureoles around intrusions, while at the same time promoting metamorphic reactions and having a major impact on the thermodynamics of reequilibration.

#### Acknowledgements

We thank J. Martignole, R.S.J. Lambert, A.B. Thompson, P.C. England and Jo Laird for comments, and the Royal Society, London for support. Much of the computing was carried out during tenure of fellowships at E.T.H. Inst. für Krist. und Petrographie and E.T.H. Inst. für Geophysik, Zürich, Switzerland: our thanks to Professors Mueller, Thompson, Tromsdorff and Hsu. Thanks too, to L. McMonagle.

#### References

- Bickle, M.J., C.J. Hawkesworth, P.C. England and D. Athey, 1975, A preliminary thermal model for regional metamorphism in the Eastern Alps: *Earth Planet. Sci. Lett.*, v. 16, p. 13-28.
- Dodson, M., 1973, Closure temperatures in cooling geochronological and petrological systems: *Contrib. Mineral Petrol.*, v. 40, p. 259-274.
- England, P.C. and S.W. Richardson, 1977, The influence of erosion upon the mineral facies of rocks from different tectonic environments: *J. Geol. Soc. Lond.*, v. 134, p. 201-213.
- Graham, C.M. and P.C. England, 1976, Thermal regimes and regional metamorphism in the vicinity of overthrust faults: an example of shear heating and inverted metamorphic zonation from Southern California: *Earth Planet. Sci. Lett.*, v. 31, p. 142-152.
- Harrison, T.M., R.L. Armstrong, C.W. Naeser, and J.E. Harahal, 1979, Geochronology and thermal history of the Coast Plutonic Complex near Prince Rupert, British Columbia: *Can. J. Earth Sci.*, v. 16, p. 400-410.
- Harrison, T.M. and G.K.C. Clarke, 1979, A model of the thermal effects of igneous intrusion and uplift as applied to Quottoon pluton, British Columbia: *Can. J. Earth Sci.*, v. 16, p. 411-420.
- McKenzie, D.P., 1981, The variation of temperature with time and hydrocarbon maturation in sedimentary basins formed by extension: *Earth Planet. Sci. Lett.*, v. 55, p. 87-98.
- Miyashiro, A., 1973, *Metamorphism and metamorphic belts*: Allen and Unwin, London, Wiley N.Y., 492 pp.
- Nisbet, E.G. and C.M.R. Fowler, 1982, The thermal background to metamorphism-1. Simple one-dimensional models: *Geoscience Canada*, v. 9, p. 161-164.
- Niggli, E., 1970, Alpine metamorphose und Alpine Gebirgsbildung *Fortschritte Mineral.* v. 47, p. 16-26.
- Putnis, A. and J.D.C. McConnell, 1980, Principles of mineral behaviour, Blackwell Scientific Publications, Oxford, 257 p.
- Thompson, A.B., 1981, The pressure-temperature (P-T) plane viewed by geophysicists and petrologists: *Terra Cognita. Journal of European Union of Geosciences*, vol. 1, p. 11-20.

#### Appendix

The general differential equation governing heat conduction in a moving medium is:

$$\underline{u} \cdot \nabla T + \frac{\delta T}{\delta t} = \frac{K \nabla^2 T}{\rho c} + \frac{A}{\rho c}$$

with  $T$  = temperature field  
 $K$  = conductivity  
 $\rho$  = density  
 $c$  = specific heat  
 $A$  = heat production  
 $\underline{u}$  = velocity

For a two-dimensional model undergoing uplift and erosion, but no horizontal motion, this equation becomes:

$$\frac{\delta T}{\delta t} = \frac{K}{\rho c} \left( \frac{\delta^2 T}{\delta x^2} + \frac{\delta^2 T}{\delta z^2} \right) + \frac{A}{\rho c} + \frac{u \delta T}{\delta z}$$

For the one-dimensional models examined this equation was solved numerically using the Crank-Nicholson implicit finite-difference approximation (Carslaw and Jaeger, 1959). Solutions for the two-dimensional models were computed using explicit finite-difference approximations and/or the slightly faster alternating-direction implicit (ADI) finite-difference method (Douglas, 1955; Peaceman and Rachford, 1955). The accuracy of the two-dimensional solutions is not much better than 5%, but this is quite sufficient to study the development of the temperature field and determine the type of metamorphic facies series each model can yield.

Carslaw, H.S. and Jaeger, 1959, Conduction of heat in solids, Oxford University Press.

Douglas, J., 1955, On the numerical integration of

$$\frac{\delta^2 u}{\delta x^2} + \frac{\delta^2 u}{\delta y^2} - \frac{\delta u}{\delta t}$$

implicit methods, J. Soc. Indust. Appl. Math., v. 3, p. 42-65.

Pearceman, D.W. and H.H. Rachford, 1955, The numerical solution of parabolic and elliptic differential equations: J. Soc. Indust. Appl. Math., v. 3, p. 28-41

MS received April 5, 1982;

Revised August 1, 1982

## CANADIAN SOCIETY OF PETROLEUM GEOLOGISTS

CALGARY, ALBERTA

# LEXICON OF CANADIAN STRATIGRAPHY

I Arctic Archipelago 1981  
Eds. R.L. Christie and A. Embry  
Hard Cover \$ 8.60 Canada  
\$10.00 International  
Soft Cover \$ 6.60 Canada  
\$10.00 International

II Yukon, Mackenzie 1981  
Eds. L.V. Hills, E.V. Sangster, L.B. Suneby  
Hard Cover \$23.00 Canada  
\$24.20 International  
Soft Cover \$21.00 Canada  
\$22.20 International

III Western Cordillera (1982)\*  
Ed. W.R. Danner

IV Western Canada (1983)\*  
Ed. P.A. Monahan

V Central Canada and St. Lawrence Lowlands (1983-84)\*  
Ed. Tom Bolton

VI Maritime Provinces and East Coast Offshore (1983-84)\*  
Ed. Graham Williams

VII Precambrian Shield (1984)\*

VIII Tectonic Features of Canada (1984)\*  
Eds. Donald Cook and L.V. Hills

The Society is publishing seven Lexicons of Canadian Stratigraphy and one of Tectonic Features of Canada. Two have been published and are being distributed. It is planned to have all the volumes completed by the end of 1984.

This is one of the major projects of the Society. It ranks with any of the previous C.S.P.G. undertakings. The co-ordinator is Dr. L.V. Hills, Department of Geology, University of Calgary. Hundreds of geologists are involved - 92 on the Committee for Volume IV on Western Canada alone.

All will be available in hard or soft cover, 16x23 cm. Thorough bibliographies support the volumes - for example 700 references in Volume II for Yukon-Mackenzie.

\*Prices available after the volumes are printed.

Quoted prices include handling and mailing charges.

Send money in Canadian funds with order to -

Canadian Society of Petroleum Geologists,  
#505, 206 - 7th Avenue S.W.  
Calgary, Alberta T2P 0W7  
Canada

