

# Canadian Medical Education Journal Revue canadienne de l'éducation médicale



## Arscience 2.0

Rachelle Lee-Krueger

Volume 13, Number 2, 2022

URI: <https://id.erudit.org/iderudit/1090351ar>

DOI: <https://doi.org/10.36834/cmej.75247>

[See table of contents](#)

### Publisher(s)

Canadian Medical Education Journal

### ISSN

1923-1202 (digital)

[Explore this journal](#)

### Cite this document

Lee-Krueger, R. (2022). Arscience 2.0. *Canadian Medical Education Journal / Revue canadienne de l'éducation médicale*, 13(2), 252–252.  
<https://doi.org/10.36834/cmej.75247>

© Rachelle Lee-Krueger, 2022



This document is protected by copyright law. Use of the services of Érudit (including reproduction) is subject to its terms and conditions, which can be viewed online.

<https://apropos.erudit.org/en/users/policy-on-use/>

érudit

This article is disseminated and preserved by Érudit.

Érudit is a non-profit inter-university consortium of the Université de Montréal, Université Laval, and the Université du Québec à Montréal. Its mission is to promote and disseminate research.

<https://www.erudit.org/en/>

## Arscience 2.0

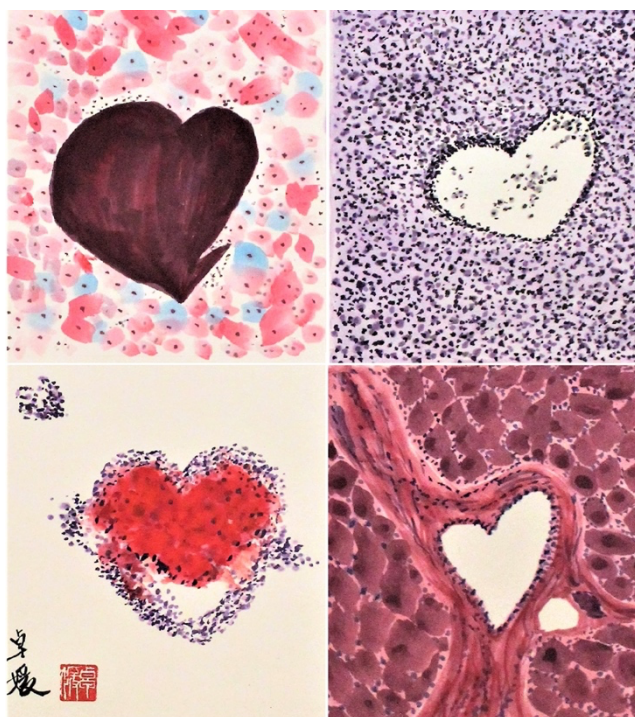
Rachelle Lee-Krueger<sup>1</sup>

<sup>1</sup>University of Ottawa, Ontario, Canada

Correspondence to: Rachelle Lee-Krueger; email: rlee062@uottawa.ca

Published: May 3, 2022; CMEJ 2022, 12(3) Available at <https://doi.org/10.36834/cmej.75247>

© 2022 Lee-Krueger; licensee Synergies Partners. This is an Open Journal Systems article distributed under the terms of the Creative Commons Attribution License. (<https://creativecommons.org/licenses/by-nc-nd/4.0>) which permits unrestricted use, distribution, and reproduction in any medium, provided the original work is cited.



From left to right, top to bottom: Pap smear, lymph node, lung carcinoma, parotid gland

This artwork is submitted as a sequel to the cover art published in the October 2019 issue of *Academic Medicine*.<sup>1</sup> To depict the foundations of western medicine, the artist chose Chinese painting as the medium to symbolize the intersecting cultures and values that shape contemporary medicine. This *Arscience* series comprises of the artist's inherent reflections about becoming a medical educator and researcher – one who started as an anatomy teaching associate for a medical school to eventually finding an academic niche in the broad world of medical education.

Since its creation, the artist hopes to embody *Arscience* with a new meaning to how she now views this artwork. Since joining a new academic community in completing a PhD, *Arscience 2.0* reminds the artist about her roots and the life mentors who continue to support her through this vocational journey for shaping the process of medical education and knowledge creation. The artist experienced first-hand the importance of humanistic and relationship-centred learning in medicine globally. *Arscience 2.0* is dedicated to clinicians, educators, and researchers who have sacrificed tirelessly to ensure that the safest practices are always upheld. As we come out from the exhausting battle of a global pandemic, it is these trusting connections that will truly support us through a recovery from the hurt and losses.

*Arscience 2.0* marks the end of this art series, but these values should remain as the fundamental tenets of medical educationalists contributing to the advancement of this field

**Disclosures:** *Arscience*, which contains a total of nine images—four images published for cover art in the October 2019 issue and four new images for this issue—is currently displayed within the Office of Health and Medical Education Scholarship at the Cumming School of Medicine, University of Calgary, Calgary, Alberta. Artist owns the artwork and has permission to publish.

**Acknowledgements:** With gratitude to Gretchen Greer and ongoing supporters of this artwork—past, present, and future.

## References

1. Lee-Krueger R. Artist's statement: *Arscience*, *Acad Med*: Oct 2019;94(10): p 1471  
<https://doi.org/10.1097/ACM.0000000000002880>