

ADDENDUM to Geoscience Canada Volume 16, Number 3 (p. 124)

Volume 16, Number 4, December 1989

URI: https://id.erudit.org/iderudit/geocan16_4add01

[See table of contents](#)

Publisher(s)

The Geological Association of Canada

ISSN

0315-0941 (print)

1911-4850 (digital)

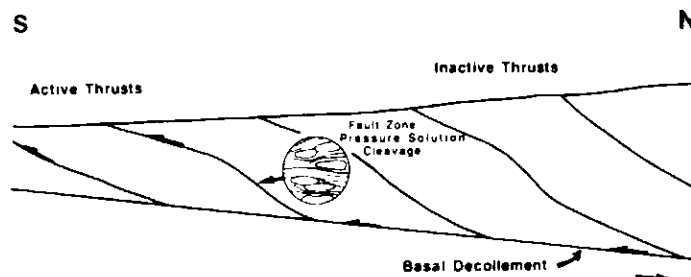
[Explore this journal](#)

Cite this document

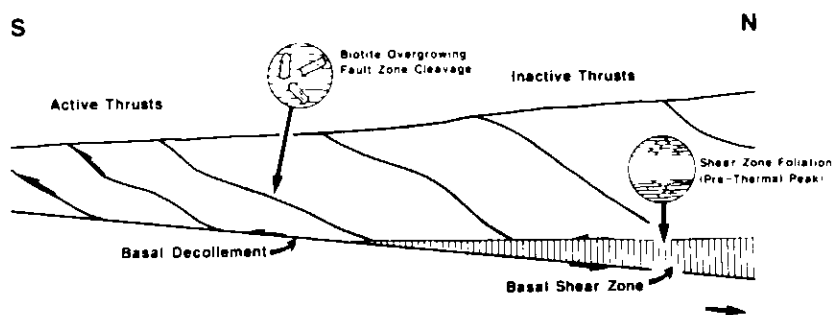
(1989). ADDENDUM to Geoscience Canada Volume 16, Number 3 (p. 124).
Geoscience Canada, 16(4), 212–212.

Figure 3 (a-d) Schematic representation of the structural evolution of the thrust belt during D_1 . The figure illustrates the basic geometry, kinematics and deformation-metamorphism relationships associated with the evolution of the thrust belt

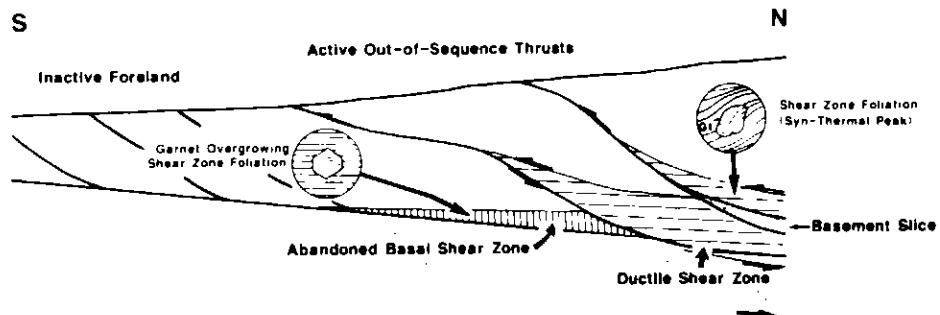
(a) Early D_1 Deformation



(b) Basal Shear Zone Deformation



(c) Syn-Thermal Peak Out-of-Sequence Thrusting



(d) Post-Thermal Peak Out-of-Sequence Thrusting

