

CV Photo

Kelly Lycan Kelly Lycan Green House Plants

Sara Hartland-Rowe

Numéro 31, été 1995

URI : <https://id.erudit.org/iderudit/21718ac>

[Aller au sommaire du numéro](#)

Éditeur(s)

Les Productions Ciel variable

ISSN

1196-9261 (imprimé)

1923-8223 (numérique)

[Découvrir la revue](#)

Citer cet article

Hartland-Rowe, S. (1995). Kelly Lycan / Kelly Lycan: Green House Plants. *CV Photo*, (31), 14–21.

l y kelly c a n



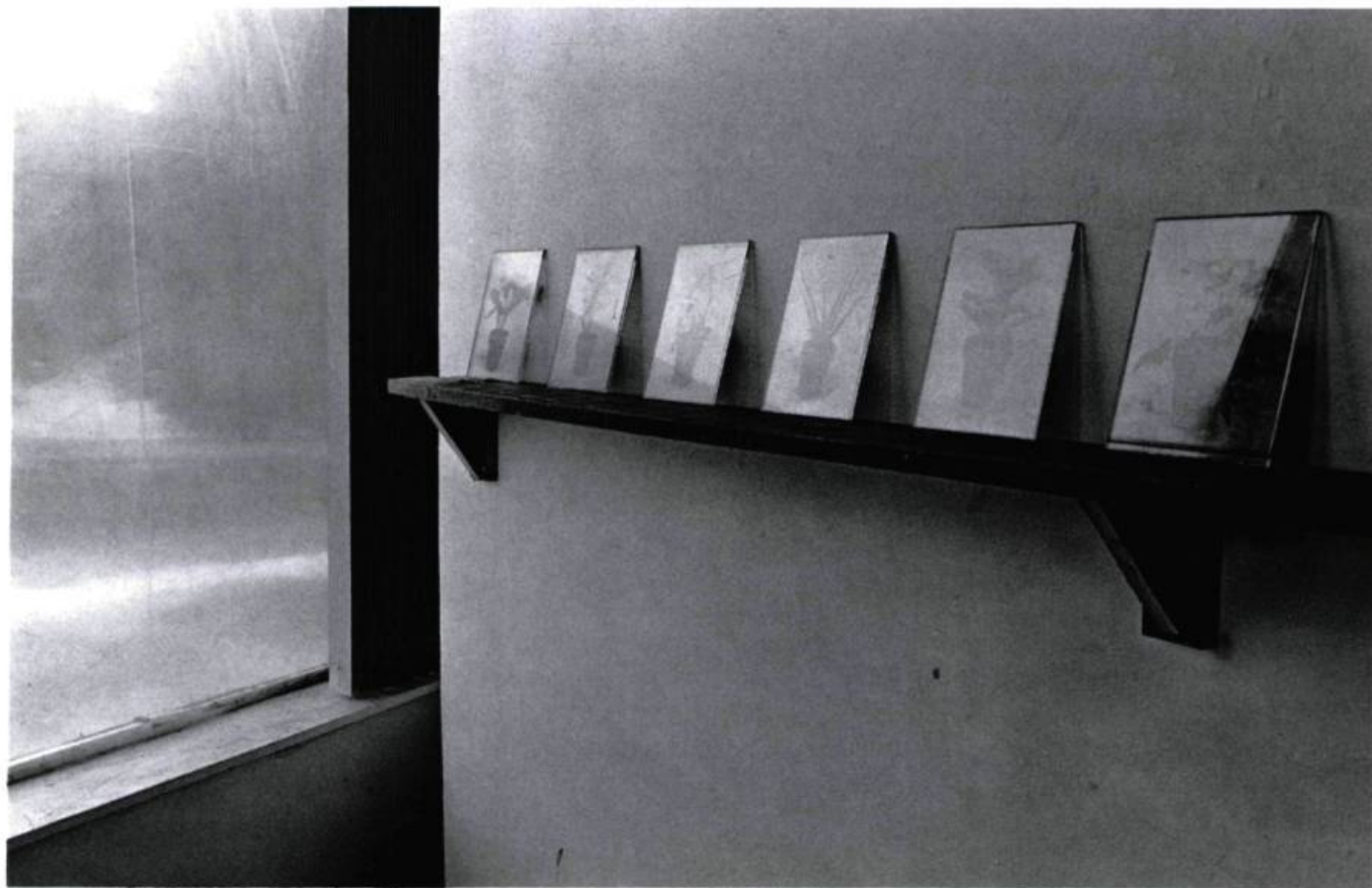
On m'a raconté, il y a quelques années, l'histoire d'un photographe du XIX^e siècle. À sa mort, personne ne voulut de son fonds. L'ensemble de son travail était constitué de négatifs sur plaques de verre. Finalement, quelqu'un récupéra ses caisses de négatifs pour s'en faire une serre. Avec le temps, exposées au soleil, les images négatives inscrites sur ces plaques se sont effacées. Il n'y a pas très longtemps, lorsque j'emmenageai dans un nouvel appartement, j'y trouvai quatre petites plantes qui poussaient dans des contenants de margarine. Ne voulant pas me sentir coupable de leur perte, je leur prodiguai donc les soins nécessaires. Lorsque j'appris que le couple qui avait abandonné ces plantes dans l'appartement s'était séparé, je cessai de les soigner. Elles sont mortes.

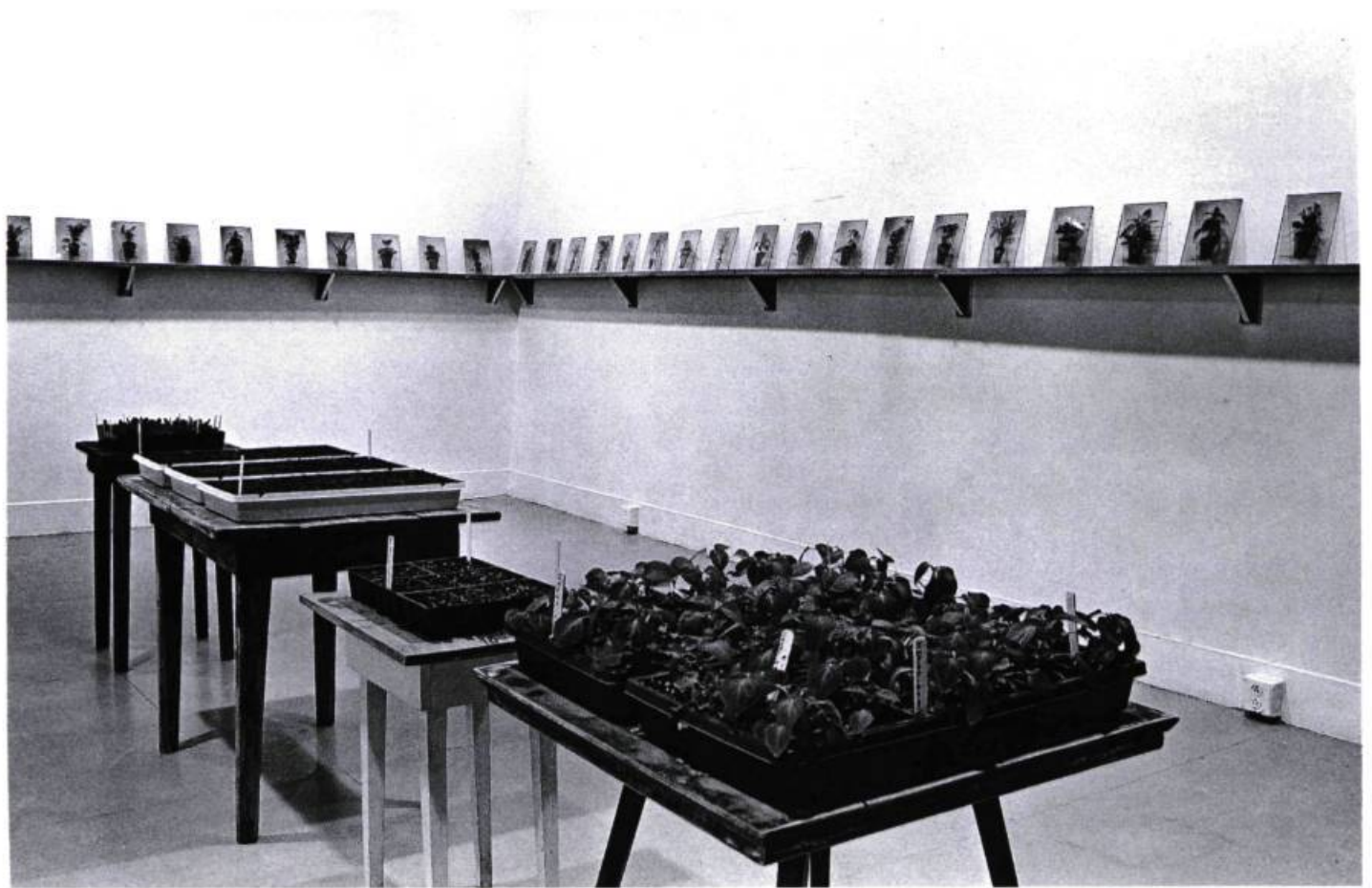
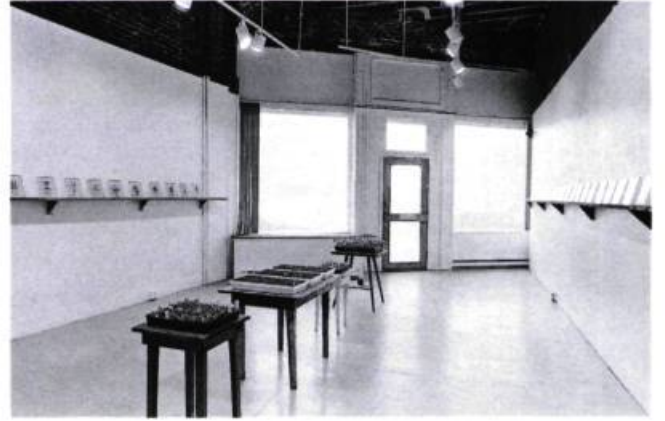
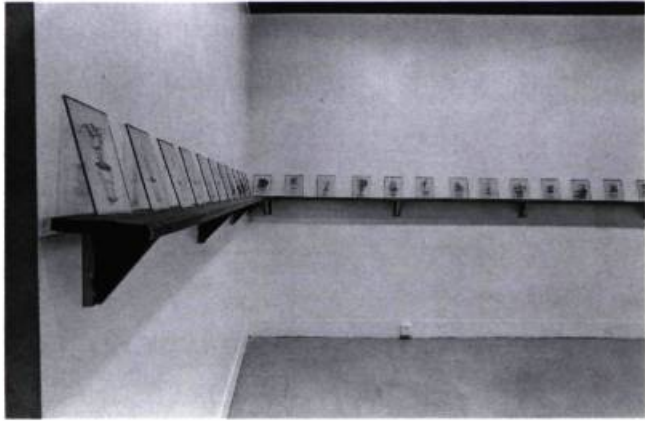
LES PLAQUES DE VERRE DOIVENT ÊTRE ARROSÉES QUOTIDIENNEMENT À 11 H.A.M.

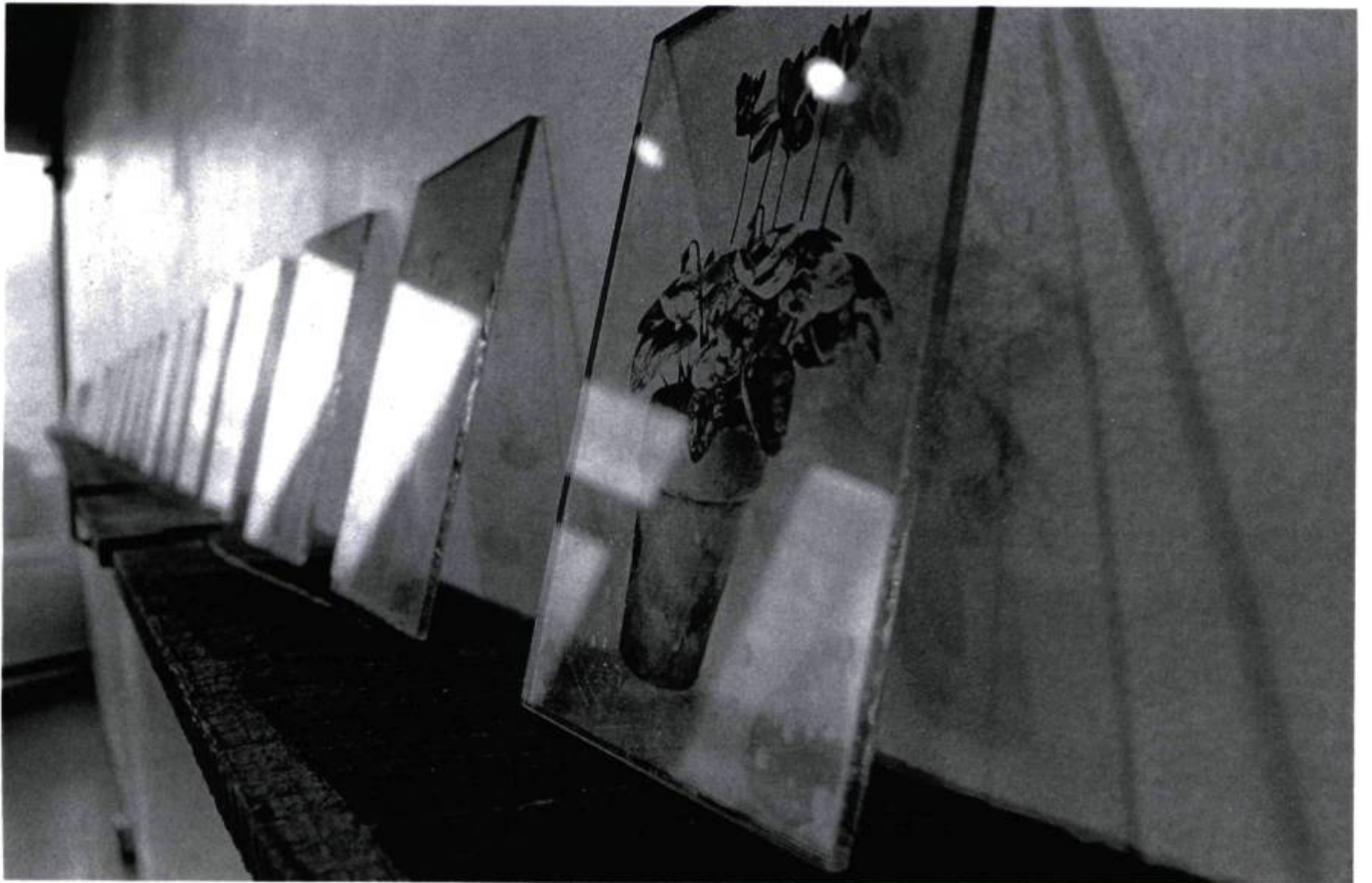
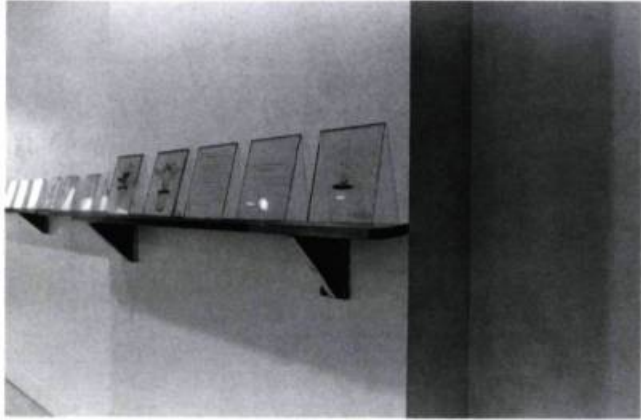
CHAQUE JOUR, ELLES PÂLIRONT UN PEU PLUS.

Épreuves sur pellicule orthochromatique de formats variables

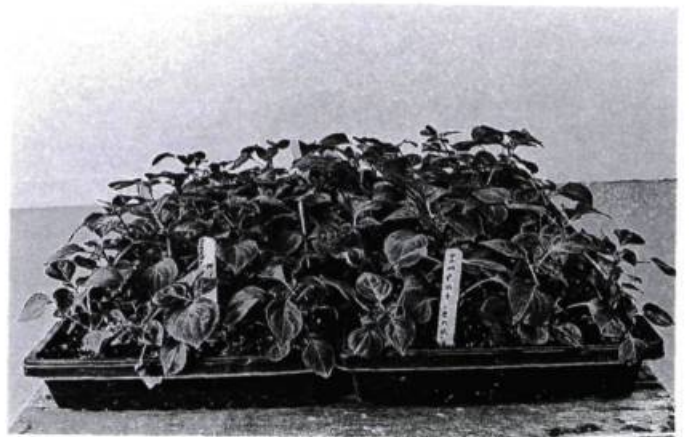
Orthochromatic prints of different sizes

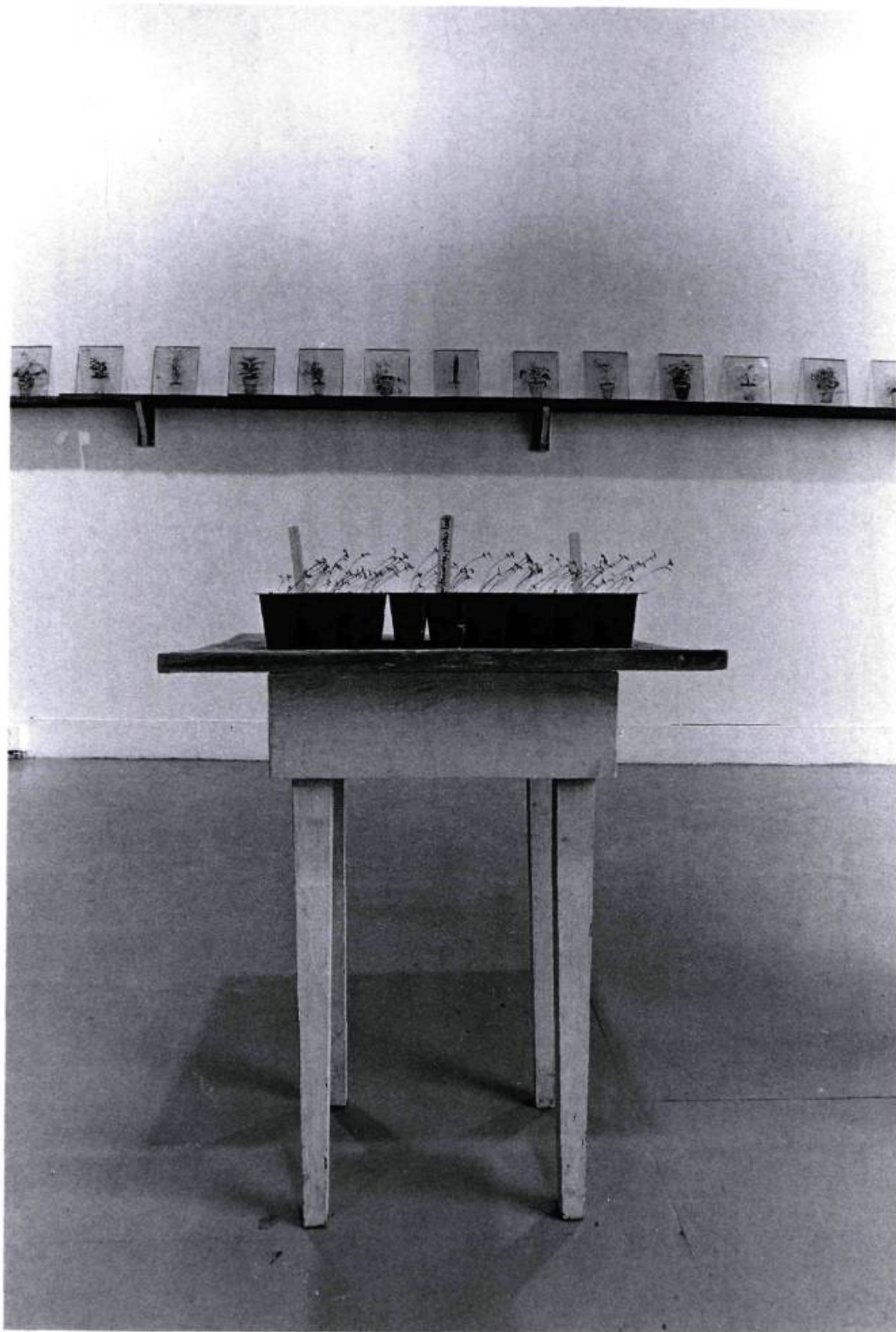












g r e e n
 h o u s e
 p l a n t
 s

I heard a story a few years ago about a nineteenth-century photographer. His entire body of work consisted of hundreds of glass-plate negatives that no one wanted when he died. Eventually, someone took the glass plates to make walls for a greenhouse. Through exposure to the sun over time, the images faded until the glass became clear. Recently, when I moved into a new apartment, I found four small houseplants resting in margarine containers. I kept watering them so that I wouldn't feel guilty about them dying. When I found out that the couple that used to rent the apartment had split up, I let the houseplants die.

THE GLASS-PLATE HOUSEPLANTS WILL BE WATERED DAILY AT ELEVEN A.M.

EACH DAY THEY WILL FADE A LITTLE MORE.

In one of the slides that Kelly Lycan lent to me of her show *Green House Plants*,¹ the artist herself can be faintly seen, reflected in the glass plate that she is capturing permanently in her documentation. Just as the delicate images of sepia-coloured houseplants have faded from these plates through Lycan's reverse chemical processing, so her image vanished from the plate as she moved about the gallery tending both greenhouse and houseplants. The passage from one state to another is the operative principle of this installation: the timeless space of the gallery is transformed into the living space of a greenhouse in which growth and decay move gently, inexorably, but perhaps not ineradicably, from stage to stage.

Lycan tended four kinds of houseplants throughout the duration of the show. Each of the four tables in the centre of the gallery held a flat of seedlings or young plants: on the first table were petunias – Summer Madness, Red Madness, and White Madness; on the second, touch-sensitive plants that folded in their leaves when lightly brushed; on the third, opportunistic broccoli that had taken root in the husk of a withered celery stalk; and on the fourth, the most developed – the closest to flowering and then to decay – impatiens. Surrounding these tables, on shelves running along the walls of the gallery, were 75 glass plates. Both plates and shelves referred to earlier incarnations: the plates harkened back to the glass negatives used by photographers in the nineteenth century, while the

Kelly Lycan a reçu des bourses du Conseil des Arts du Canada et du Conseil des Arts de l'Ontario, et ses œuvres font partie de prestigieuses collections au Canada. Elle est peu connue au Québec, mais son travail est souvent présenté dans les galeries de la Nouvelle-Écosse, de l'Ontario et de l'Ouest canadien.

Kelly Lycan has been granted awards from the Canada Council for the Arts and the Ontario Arts Council, and is exhibiting her photographs in galleries in Ontario, Nova Scotia, and western Canada. Her works have been included in prestigious art collections.

Sara Hartland-Rowe est diplômée du Nova Scotia College of Art and Design et possède une maîtrise de l'université de l'Illinois à Chicago. Elle a aussi fréquenté l'École des beaux-arts de Boston. Elle a à son actif de nombreuses expositions au Canada et aux États-Unis. Elle publie à l'occasion des textes sur des artistes qui lui sont chers, dont Kelly Lycan.

shelves were made from boards taken from an old greenhouse. Two of the glass plates were clear save for a brief anecdote on each that spoke of the passing of things held dear – one's love, or one's work.

This was a space of nurturance, in which the young plants were protected by artificial heat and humidity. It was also the site of a carefully monitored disintegration; the tang of the chemicals mixed with water with which Lycan gradually erased images of houseplants from the glass plates mingled briefly with the scent of earth and growing things. The entire space was mediated by the only permanent forms in the room, the clear glass plates, which oxymoronically described the restless passage of time.

For Lycan, the work contained polarities that she was obliged to confront – of permanence and impermanence, of remembrance and forgetting, and of presence and absence. Yet, the environment created in the gallery, which quietly alluded to cyclical changes, fused these oppositions into inseparable pairings. The fundamental process of photography – the movement of negative to positive, of light to dark – was enriched within the parameters of this installation. No longer a process by which an image is fixed permanently in place, unchanged by the exigencies of time or circumstance, Lycan's activity highlights the permeable, vulnerable character of both living forms and human understanding.

Sara Hartland-Rowe

1. The installation was exhibited at Anna Leonowens Gallery, Halifax, N.S., in March, 1992.