

## Improved Fuzzy Modelling to Predict the Academic Performance of Distance Education Students

Osman Yildiz, Abdullah Bal et Sevinc Gulsecen

Volume 14, numéro 5, décembre 2013

URI : <https://id.erudit.org/iderudit/1066888ar>  
DOI : <https://doi.org/10.19173/irrodl.v14i5.1595>

[Aller au sommaire du numéro](#)

Éditeur(s)

Athabasca University Press (AU Press)

ISSN

1492-3831 (numérique)

[Découvrir la revue](#)

Citer cet article

Yildiz, O., Bal, A. & Gulsecen, S. (2013). Improved Fuzzy Modelling to Predict the Academic Performance of Distance Education Students. *International Review of Research in Open and Distributed Learning*, 14(5), 144–165.  
<https://doi.org/10.19173/irrodl.v14i5.1595>

Résumé de l'article

It is essential to predict distance education students' year-end academic performance early during the course of the semester and to take precautions using such prediction-based information. This will, in particular, help enhance their academic performance and, therefore, improve the overall educational quality. The present study was on the development of a mathematical model intended to predict distance education students' year-end academic performance using the first eight-week data on the learning management system. First, two fuzzy models were constructed, namely the classical fuzzy model and the expert fuzzy model, the latter being based on expert opinion. Afterwards, a gene-fuzzy model was developed optimizing membership functions through genetic algorithm. The data on distance education were collected through Moodle, an open source learning management system. The data were on a total of 218 students who enrolled in Basic Computer Sciences in 2012. The input data consisted of the following variables: When a student logged on to the system for the last time after the content of a lesson was uploaded, how often he/she logged on to the system, how long he/she stayed online in the last login, what score he/she got in the quiz taken in Week 4, and what score he/she got in the midterm exam taken in Week 8. A comparison was made among the predictions of the three models concerning the students' year-end academic performance.

Copyright (c) Osman Yildiz, Abdullah Bal, Sevinc Gulsecen, 2013



Ce document est protégé par la loi sur le droit d'auteur. L'utilisation des services d'Érudit (y compris la reproduction) est assujettie à sa politique d'utilisation que vous pouvez consulter en ligne.

<https://apropos.erudit.org/fr/usagers/politique-dutilisation/>

**é**rudit

Cet article est diffusé et préservé par Érudit.

Érudit est un consortium interuniversitaire sans but lucratif composé de l'Université de Montréal, l'Université Laval et l'Université du Québec à Montréal. Il a pour mission la promotion et la valorisation de la recherche.

<https://www.erudit.org/fr/>

## Improved Fuzzy Modelling to Predict the Academic Performance of Distance Education Students



Osman Yildiz<sup>1</sup>, Abdullah Bal<sup>1</sup>, and Sevinc Gulsecen<sup>2</sup>  
<sup>1</sup>Yildiz Technical University, Turkey, <sup>2</sup>Istanbul University, Turkey

### Abstract

It is essential to predict distance education students' year-end academic performance early during the course of the semester and to take precautions using such prediction-based information. This will, in particular, help enhance their academic performance and, therefore, improve the overall educational quality. The present study was on the development of a mathematical model intended to predict distance education students' year-end academic performance using the first eight-week data on the learning management system. First, two fuzzy models were constructed, namely the classical fuzzy model and the expert fuzzy model, the latter being based on expert opinion. Afterwards, a gene-fuzzy model was developed optimizing membership functions through genetic algorithm. The data on distance education were collected through Moodle, an open source learning management system. The data were on a total of 218 students who enrolled in Basic Computer Sciences in 2012. The input data consisted of the following variables: When a student logged on to the system for the last time after the content of a lesson was uploaded, how often he/she logged on to the system, how long he/she stayed online in the last login, what score he/she got in the quiz taken in Week 4, and what score he/she got in the midterm exam taken in Week 8. A comparison was made among the predictions of the three models concerning the students' year-end academic performance.

**Keywords:** Distance education; academic performance; fuzzy logic; genetic algorithm; online learning

## Introduction

Two out of every three people use the Internet, according to a report published by the International Telecommunication Union in 2012. Similarly, the National Center for Education Statistics (NCES) reported that the number of students who took at least one course via distance education significantly increased from 1.1 million in 2002 to 12.2 million in 2006 (Brain Track, 2013). These two reports suggest that an increase in Internet use leads to a corresponding demand for distance education. Considering the advantages distance education offers, it is easy to project a further increase in the demand. Even so, distance education has its own drawbacks such as lack of motivation on the part of the individuals and limited dialogues with instructors. These disadvantages cause students to quit distance education. The number of students leaving distance education is higher than those quitting formal education (Kotsiantis, Pierrakeas, & Pintelas, 2003).

In traditional education, instructors enjoy the opportunity to observe student behaviors, which is a key contribution to testing and evaluation. On the other hand, observation is impossible in distance education. The purpose of this study is to offer a solution to the problem. In distance education, student performance can be tracked thanks to logs in the learning management system. These logs enable one to record how long a student studies teaching materials, how long he/she is active in the system, how successful he/she is in the quizzes taken, how active he/she is in the forums on the subjects, and how many messages he/she posts or reads. An analysis of these logs allows student performance to be predicted in the middle of the semester.

The objective of assessment activities for an evaluation of student performance is not to grade students or to provide them with a certificate or other similar documents if they prove to be successful; instead, the objective is to have the opportunity to revise and improve the education and assessment instruments so that educational activities can be enhanced as a whole (Simonson, Smaldino, Albright, & Zvacek, 2003). Therefore, predicting student performance offers a number of benefits both to the organization and to instructors. Predicting student performance early at the beginning of the academic year enables one to take precautions so that high-risk students will not face adverse consequences later on.

The present study was based on predicting distance education students' year-end academic performances using a fuzzy-based model. The input data were comprised of particular variables in the learning management system as well as the results of the quiz in Week 4 and the midterm exam in Week 8.

## Literature Review

A review of literature suggests that there are similar studies on the issue. A number of international publications have attempted to predict student performance using machine learning techniques. International publications share one characteristic: They are involved in predictions based on the categories “pass” or “fail” as a standard for performance (Zafra & Ventura, 2009). Such studies only predict whether a student can pass or fail. They have recommended that further studies could focus on predicting student grades and attempt to find the minimum length of time sufficient for prediction before the final exam.

Lykourantzou et al. (2009) used multiple genetic algorithms on the basis of an evaluation of results derived from three different methods to predict whether a student would quit a course or school. The study employed test results, project evaluations, and demographics (Lykourantzou, Giannoukos, Nikolopoulos, Mpardis, & Loumos, 2009).

In another study, Vandamme et al. (2007) attempted to predict who would fail in a course or quit the school. To do so, they used artificial neural networks by classifying students under low, medium, or high-risk groups depending on such data as demographics, socio-economic background, and academic background (Vandamme, Meskens, & Superby, 2007).

Dimitris and Christos (2006) predicted distance education students' academic performance using genetic algorithm and decision trees. In another study, Zafra and Ventura (2009) predicted whether students would pass or fail a course using multiple instance genetic algorithms. The study was based on student activities in the form of quizzes, assignments, and forums.

The research by Kalles and Pierrakeas (2004) analyzed students' academic performance through the academic years measuring students' homework assignments, and implemented short rules that explain success and predict success or failure in the final exams. Ibrahim and Rusli (2007) used neural network, decision tree, and linear regression to estimate students' academic performance. In this work, they used demographic profiles and students' first semester cumulative grade point averages (CGPA) to predict final CGPA.

## Purpose and Research Questions

It is essential in distance education to predict students' year-end academic performance in the middle of the academic year. Such prediction can enable one to take precautions for improving not only student performance but also the efficiency of distance education. Therefore, the present study attempted to find an answer to the following questions:

1. Do the results derived from the fuzzy-based model constructed have a satisfactory accuracy rate?
2. Would it bring about a significant difference in the accuracy rate if membership functions for the fuzzy-based model were reconstructed in accordance with expert opinion?
3. Would it bring about a significant difference in the accuracy rate if the intervals of the membership functions for the fuzzy-based model were optimized through genetic algorithm?

## Method

### Sample

The data for the study were initially on a total of 242 students who enrolled in Basic Computer Sciences at Yildiz Technical University during the 2011-2012 academic year. Since 24 of them had not participated in any of the activities in distance education throughout one semester, they were excluded, which meant that the study was conducted on 218 students. Demographics were not incorporated into the analysis. The data consisted of five inputs and one output. Out of the inputs, three were collected through Moodle, the distance education program on which the classes were based. These inputs were recency, which stood for the last time a student logged on to the section of the system related to the course; frequency, which represented the frequency at which a student logged on to the system; and monetary, which showed the amount of time (minutes) a student spent on the section of the system related to the course. Firstly, the data on the first six weeks starting from the beginning of the semester were collected through Moodle in the form of logs. The log file was comprised of approximately 55,000 lines. The software written in the Matlab environment ensured that recency, frequency, and monetary values could be calculated in these crowded data for each student. The fourth input was the results of the quiz administered online through Moodle in Week 4. The fifth input was the results of the midterm exam administered formally in Week 8. Within the scope of the course, students were required to take three online quizzes, two midterm exams, and one final exam. All these exams had their own influence on the year-end academic performance. To put it in a more clear way, three online quizzes, two midterm exams, and one final exam represented 20%, 40%, and 40% of the year-end academic performance respectively.

A fuzzy inference system was modeled so as to predict distance education students' year-end academic performance. First, a classical fuzzy was modeled. Then, it was remodeled in accordance with expert opinion. Finally, the model was optimized via genetic algorithm.

## Fuzzy

In classical sets, an element is a member of a set or not. In mathematical terms, when an element belongs to a set, its degree of membership in that set is “1”. However, when it is not a member of a set, its degree of membership in that set is “0”. In fuzzy logic, nevertheless, each member has a value of membership that ranges between 0 and 1. Moreover, one element can be a member of more than one set. Take the statement that “those who are above 1.85 m. in length are tall”. According to classical logic, those who are above 1.85 m in length are tall, but those who are 1.85 m in length are not tall. In contrast, fuzzy logic asserts that a person who is 1.85 m in length is tall with a 0.9 degree of membership and of medium height with a 0.1 degree of membership.

Not everything in our lives is comprised of 1s and 0s as in classical sets. Rather, they have a number of uncertainties. In today’s world, fuzzy logic is commonly used for modeling and solving a problem dominated by uncertainties.

Fuzzy logic generally contains three stages. Fuzzification is the process where actual values as inputs in the system are blurred. Each input value is assigned a value of membership and turned into linguistic forms. The second stage is where rules are processed. Here, rules are derived in the form of “if then”. Inputs are handled in accordance with the rule table. The third stage, defuzzification, involves transforming fuzzy values into actual values. Figure 1 presents the structure of a common fuzzy system.

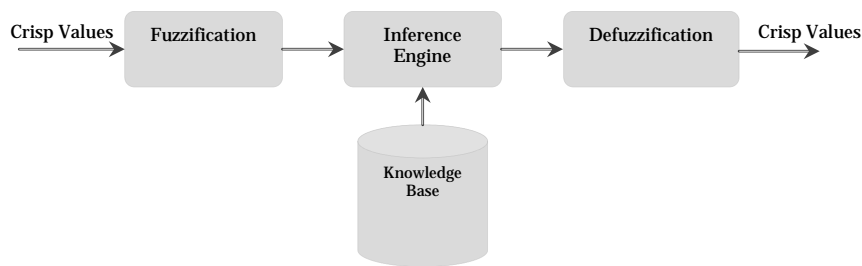


Figure 1. Structure of a fuzzy logic model (Osofisan, 2013).

The reason for using a fuzzy logic in the present study is its advantages. These are the facts that models can be established in an easy way through linguistic variables, imprecise/contradictory inputs are allowed, rules can be established in an easy way to design the model, and linguistic terms between input variables and output variables can be understood easily (Valluru, 1995).

Apart from these advantages of a fuzzy logic, its main disadvantage has been argued to be the necessity of establishing rules and membership function intervals in accordance with learned opinion (Taylan & Karagozolu, 2009).

## Genetic Algorithm

Genetic algorithm (GA) is a method of optimization that employs techniques associated with genetic process in living creatures in nature. Based on “the survival of the fittest”, it intends to find the best solution (Haupt & Haupt, 2004). GA works with a population of randomly generated individuals represented by chromosomes. Here, chromosomes are generally binary-encoded. The population has evolved toward better solutions using such genetic operators as crossover and mutation. In each new generation, the individual with the best solution generates new offspring, replacing those with poor solutions. Crossover hybridizes the genes of two parent chromosomes and generates child chromosomes. In this way, an increase is experienced in the number of individuals that will yield the best solution. The main component here is fitness function, which plays a role in deciding on good or bad solutions (Cordon, Herrera, Hoffmann, & Magdalena, 2001). Mutation is the process of altering, at a randomly determined rate, the genes of the chromosomes of the individuals in the population. The reason for the process is to ensure that the next generation will not be the same as the preceding generation. Figure 2 shows the flow chart of genetic algorithm.

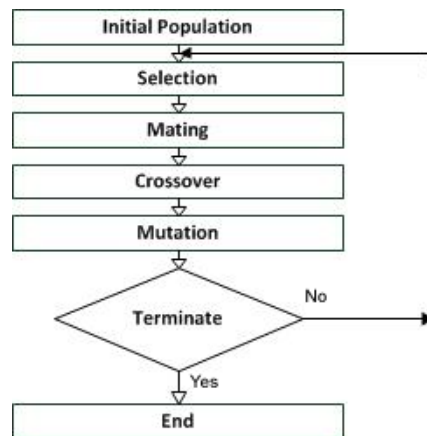


Figure 2. Simplified flow chart of a genetic algorithm (Keet, 2013).

## Gene-Fuzzy

Fuzzy model has two significant steps following the determination of input and output variables. These are establishing fuzzy rules and determining membership function intervals.

Fuzzy rules can be created depending on data or by consulting experts. In this study, rules are generated by consulting experts. Some rules of the model are as follows.

1. If (recency is very poor) and (frequency is poor) and (monetary is very poor) and (quiz is medium) and (midterm is poor) then (academic performance is poor)

2. If (recency is poor) and (frequency is medium) and (monetary is very good) and (quiz is poor) and (midterm is poor) then (academic performance is poor)

3. If (recency is poor) and (frequency is poor) and (monetary is poor) and (quiz is very poor) and (midterm is poor) then (academic performance is poor)

...

12. If (recency is very good) and (frequency is very poor) and (monetary is very good) and (quiz is very good) and (midterm is medium) then (academic performance is medium)

13. If (recency is very good) and (frequency is very poor) and (monetary is very good) and (quiz is very poor) and (midterm is poor) then (academic performance is medium)

14. If (recency is very good) and (frequency is very poor) and (monetary is very good) and (quiz is very poor) and (midterm is very good) then (academic performance is medium)

...

49. If (recency is medium) and (frequency is good) and (monetary is very good) and (quiz is very good) and (midterm is very good) then (academic performance is good)

50. If (recency is medium) and (frequency is medium) and (monetary is very poor) and (quiz is very poor) and (midterm is very poor) then (academic performance is good)

51. If (recency is medium) and (frequency is medium) and (monetary is good) and (quiz is very good) and (midterm is very good) then (academic performance is good)

The other most significant components of fuzzy logic systems is membership functions. Figure 3 shows a triangular membership function.

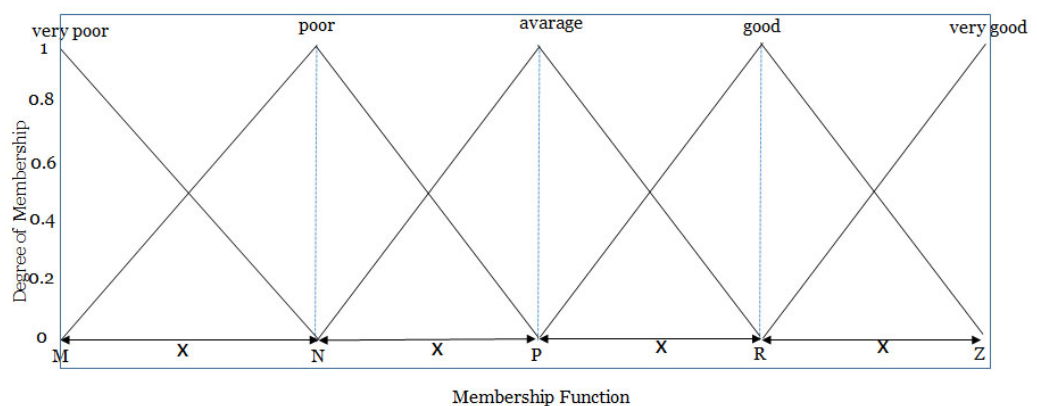


Figure 3. Fuzzy logic system membership function.



A membership function consists of shapes comprised of its own linguistic terms. The most commonly used ones are triangular, trapezoidal, or parabolic in shape. The present study is based on triangular membership functions. Each linguistic term has a particular interval value. In classical fuzzy, these intervals are determined through a number of operations. However, experiences are emphasized in the system based on expert opinion. In gene-fuzzy, starting and ending values of these intervals are determined for each membership function following the stages of genetic algorithm. Algorithm is inserted into the cycle until the optimum result is found. Determined intervals are transferred to the fuzzy logic system. This method is assumed to yield a better result than classical fuzzy, which is based on simple mathematical calculations, and expert fuzzy, which is dominated by experiences.

## Findings

### Classical Fuzzy

The fuzzy logic system constructed in this study had five inputs and one output. The former included recency, frequency, monetary, results of quiz, and midterm 1. The latter was year-end academic performance. One particular triangular membership function was determined for each input and output. Maximum and minimum points were identified on the data via normal distribution. The intervals for membership functions were revealed using these points (M, N, P, R, Z).

$X = 95\%$  in Normal Distribution

$Y = 5\%$  in Normal Distribution

$Z =$  Highest value in each data set

$T =$  Lowest value in each data set

$\text{Max} =$  Greatest (X,Z)

$\text{Min} =$  Smallest (Y,T)

$a = (\text{Max}-\text{Min})/4$

$M = \text{Min}$

$N = \text{Min}+a$  or  $\text{Max}-3a$

$P = \text{Min}+2a$  or  $\text{Max}-2a$

$$R = \text{Min}+3x \text{ or } \text{Max}-x$$

$$Z = \text{Max}$$

All these calculations yielded the following membership function:

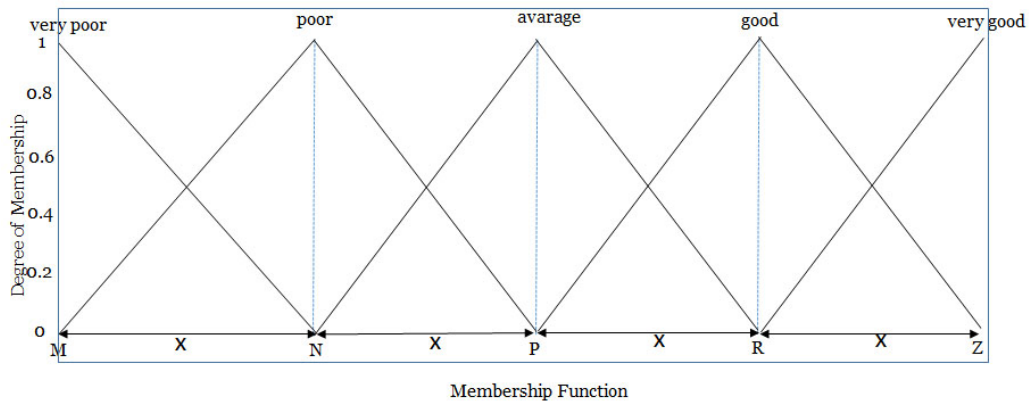


Figure 4. Classical fuzzy membership function.

The data for the study were on a total of 218 students. While 70% of the data were randomly chosen as educational data, the remaining 30% were identified as test data. The intervals of the membership functions for each input and output were determined through the process specified above. The following is an example of how the intervals of monetary membership function were determined.

Table 1

*Mean and Standard Deviation for Monetary*

Mean	22.16
Standard deviation	15.79

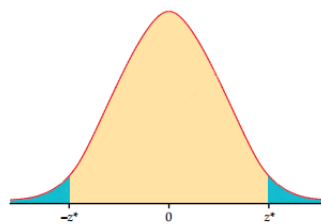


Figure 5. Normal distribution z values.

First, the values that corresponded to the top 5% and bottom 5% according to normal distribution were identified via the formula  $Z = \frac{x-\mu}{\sigma}$ .

Whereas  $z'$  value for the top 5% was -1.65, the one for the bottom 5% was +1.65 (Moore, McCabe, & Craig, 2009). The formula yielded the values  $x = -3.90$  and  $x = 48.23$ . Since the minimum value was negative, it was accepted as limit value. Maximum value in monetary was 71.7 and thus higher than 48.23. Therefore, maximum value was taken as 71.7. In order to generate a fuzzy logic membership function, it was necessary to identify the limits for the categories "poor", "average" and "good". For that reason, the lower limit was subtracted from the upper limit and it was divided by 4 in order to obtain interval values:  $x = (71.7-0) / 4 = 17.92$

Interval for the category "poor" (N) =  $0+17.92 = 17.92$

Interval for the category "average" (P) =  $17.92 + 17.92 = 35.85$

Interval for the category "good" (R) =  $35.85 + 17.92 = 53.77$

Figure 6 presents the monetary membership function determined with the data above.

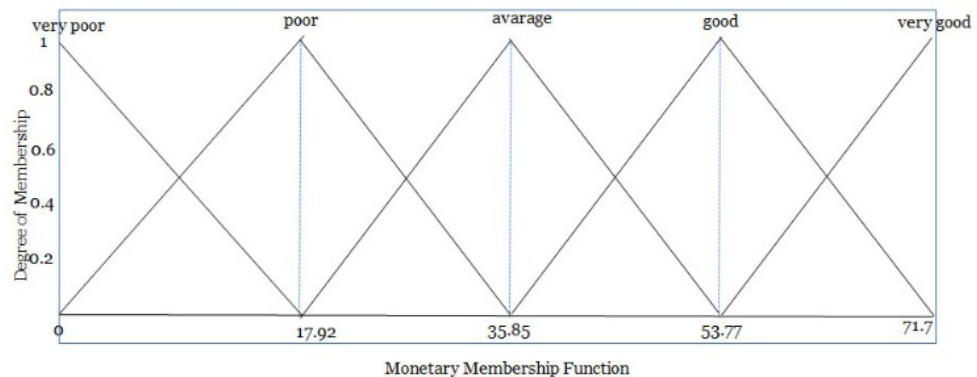


Figure 6. Interval values for monetary membership function.

The same process was followed for the other data as well, which yielded the membership functions presented in Figure 7.

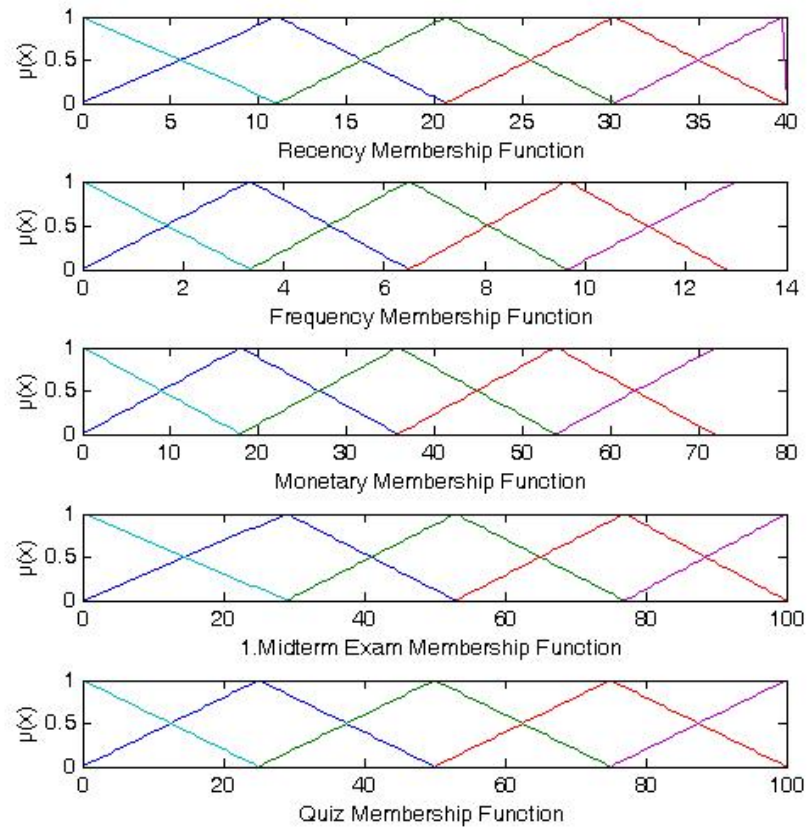


Figure 7. Membership functions for input variables.

The membership function for the output variable is presented in Figure 8.

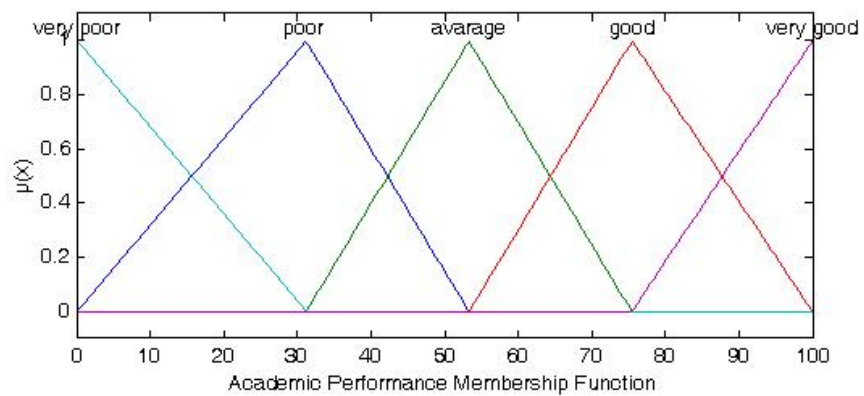
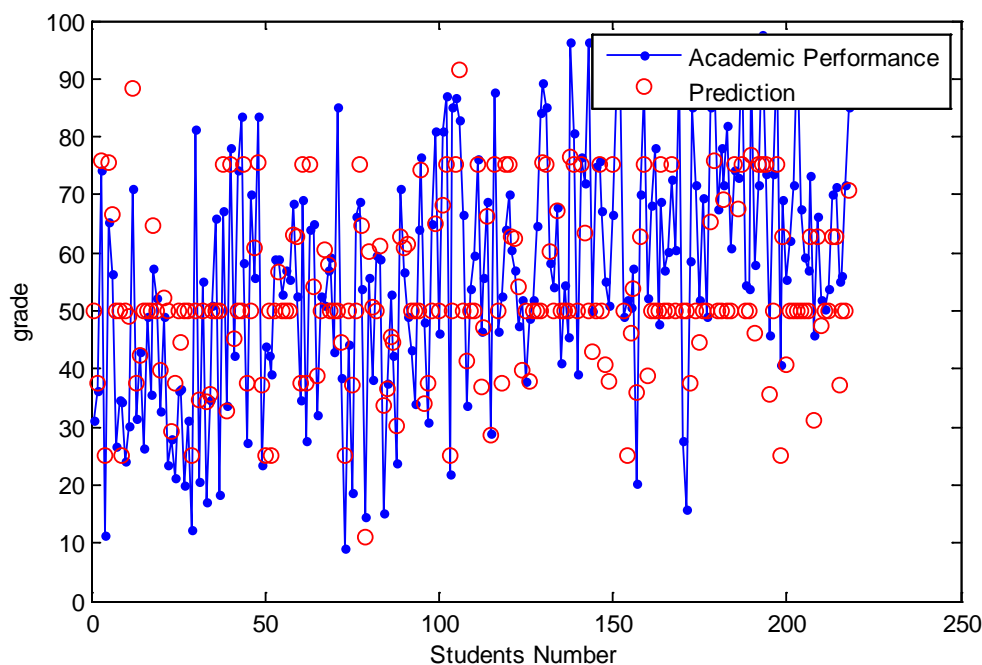


Figure 7. Membership function for the output variable.

When inputs were entered into the system to make predictions, the accuracy rate was nearly 72%.

The following is a comparison graph for the results.



Graph 1. A comparison for academic performance and prediction.

## Expert Fuzzy

The most important criteria for a fuzzy logic model are membership functions and forming rules. Membership functions are chosen by trial and error, which might take a long time. It is another significant step to determine intervals for inputs. Experiences are essential at this point. One can predict results more accurately in a fuzzy logic model based on expert opinion. In addition to the fuzzy logic model constructed in the classical way, the present study also included another model based on experiences. To exemplify, the limit for recency, which recorded how many days passed before a student logged on to the system after a particular class was uploaded to it, was [0,42]. This meant that students logged on to the system and studied the class 0 to 42 days after it had been uploaded to the system. In the classical fuzzy logic, intervals for categories “good”, “average” and “poor” were determined by subtracting the minimum from the maximum and dividing it by 4. In this case, the limit for “good” should be [0 11 20]. This meant that a student would be a member of the category “good” with a degree ranging from 0 and 1 if he/she logged on to the system 0 to 20 days after the class had been uploaded to the system. Considering the fact that revising within seven days would ensure better

understanding, the interval for the category “good” was changed to [0 7 14] in the model based on experiences. In addition to recency membership function, frequency and monetary membership functions were also changed to generate an expert fuzzy model. The results reported that the model had a mean accuracy rate of 78.62%.

Figure 9 presents the membership functions for the expert fuzzy model.

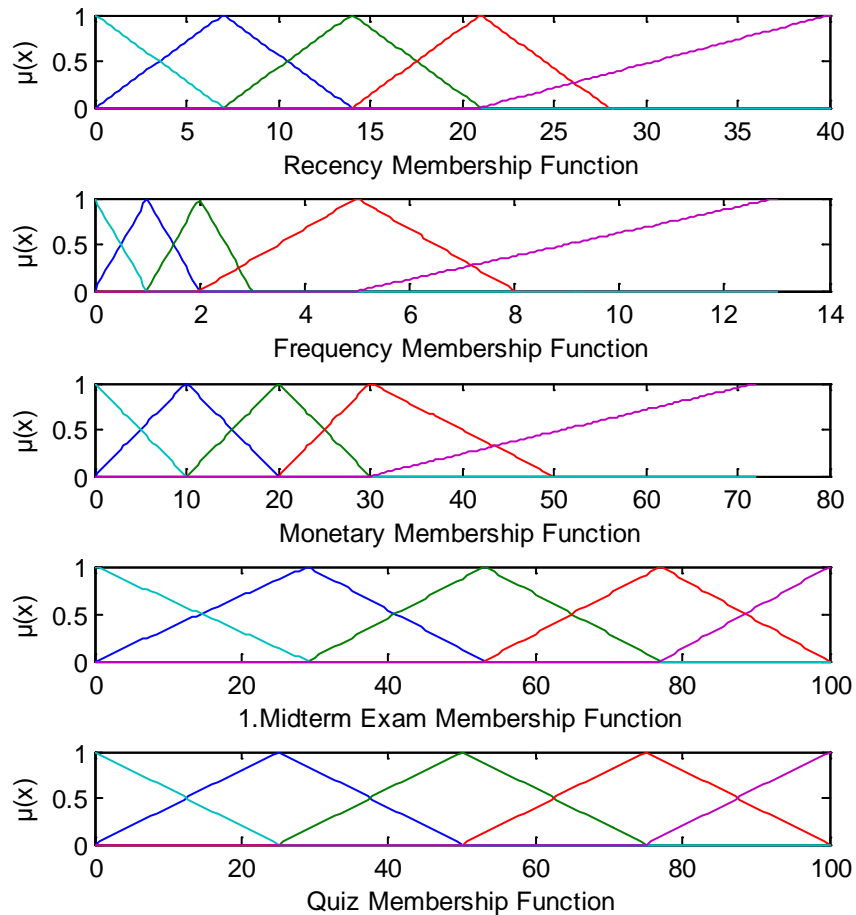
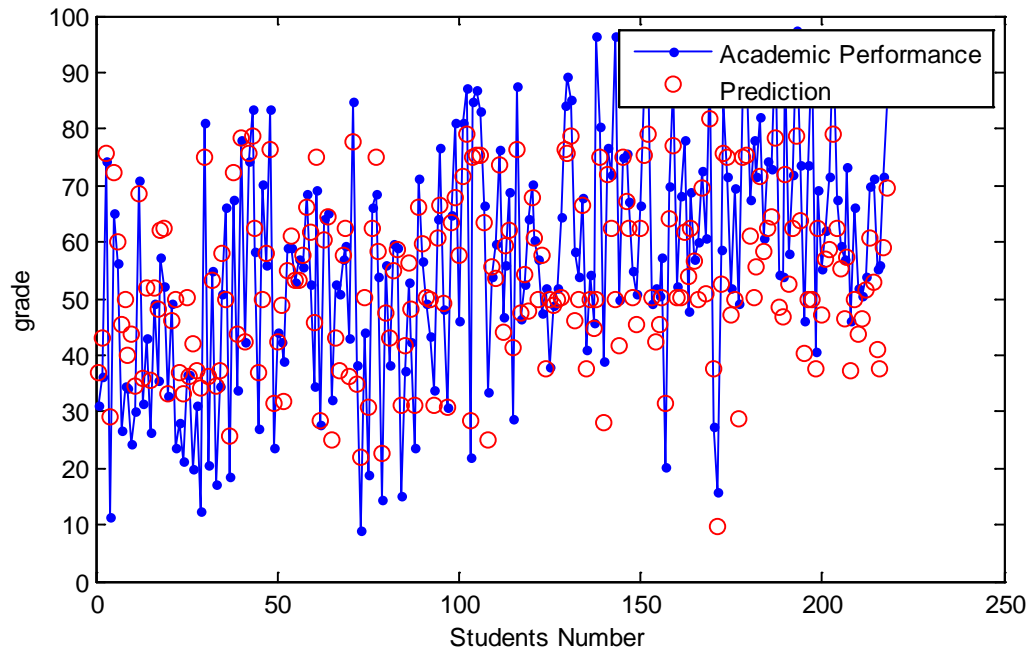


Figure 8. Membership functions for input variables.

The following is a comparison graph for the results obtained from the expert fuzzy model.



Graph 2. Comparison graph for academic performance and prediction.

## Gene-Fuzzy Model

It is rather difficult to enhance the accuracy of results that are obtained from the method based on trial and error and expert opinion for determining the intervals of membership functions. Therefore, the intervals were optimized through genetic algorithm, a method of optimization based on natural selection and evolution. The objective was to maintain those intervals that could yield the best result in a population of randomly generated numbers, to generate better intervals, and to reach the interval that could yield the best result. The stages of genetic algorithm are briefly presented below:

1. Eight numbers were generated, three numbers for each of the inputs recency, frequency, and monetary between 0 and 128. At this point, quiz and first midterm exam membership functions were incorporated into optimization at fixed intervals.
2. Previous input interval values for classical fuzzy and expert fuzzy models were added to population. Each line of the matrix of the initial population, which consisted of a total of 10 x 45 matrixes, represented the intervals of the membership functions for five inputs.
3. Values in the matrix of the initial population were applied to the fuzzy model and operated. Those values with the lowest error value according to the fitness function were listed. In the present study, the fitness function was error ratio function.

4. Five members of the population that could yield the best result by 50% selection survived (Haupt & Haupt, 2004).
5. Roulette wheel weighting was based on selecting individual performances by weighted average. The error ratios of the five members were found.

$$a. \text{ Error ratio} = \frac{1}{n} \sum_{k=1}^n |(x_k^* - x_k)| / x_k$$

$x_k^*$ : Estimated value

$x_k$ : Actual value

Error ratios for five intervals were calculated out of 100. The results are presented in the following table.

Table 2

*Mating Error Ratios*

Population number	Error ratio	Number of population members
1	0,177622	19,85411
2	0,177116	19,91076
3	0,17663	19,96559
4	0,175561	20,0871
5	0,174732	20,18244
Sum	28,35658	100

The results suggest that the first population with an error ratio of 17.76% would have 20 places in a set comprised of 100 populations. Similarly, the member of the population with an error ratio of 17.47% that could yield the best result would have 20 places. In this way, a new population pool was built.

1. Nine new members were selected from the population pool. The member of the population that could yield the best value was duplicated in the same way and, therefore, the best interval was maintained.
2. Binary encoding: Numbers in the decimal system were turned into the binary system to generate chromosomes.
3. Mating: A set was created with numbers ranging between 1 and 5. It was mated with a new set created by randomly ranking numbers from 6 to 10.
4. Crossover: Assume that two individuals mated were 0110010 and 0111001. At this point, a random number was created between 1 and 7. It was necessary to decide at which digit of the binary string the crossover would be operated. Assume that it was 5. New individuals were created by combining the first five



digits of the first individual with the last two digits of the second individual, and the first five digits of the second individual with the last two digits of the first individual. The process concluded that the first individual was 0110001 whereas the second one was 0111010.

5. Mutation: The objective of mutation is to prevent all individuals in the population from starting to yield the same result. Mutation is random selection and transformation of genes from the new individual created by crossover.
6. Iteration: Iteration was applied starting from the fourth step until the best result was obtained.

Figure 10 presents the ultimate status of the intervals following iteration.

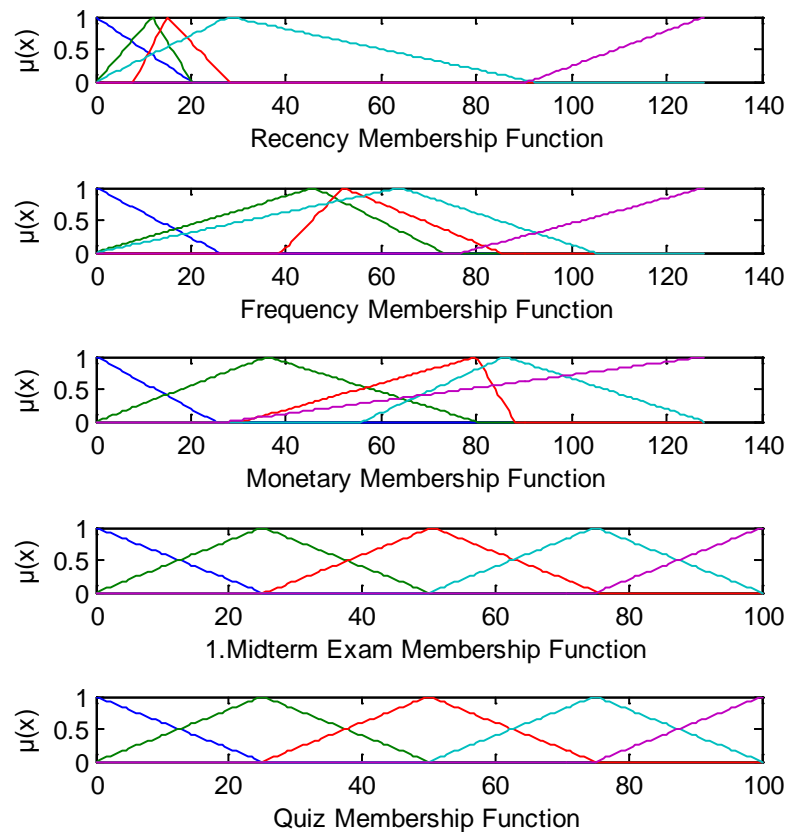


Figure 10. Membership functions by gene-fuzzy.

Figure 11 presents the membership function for the output.

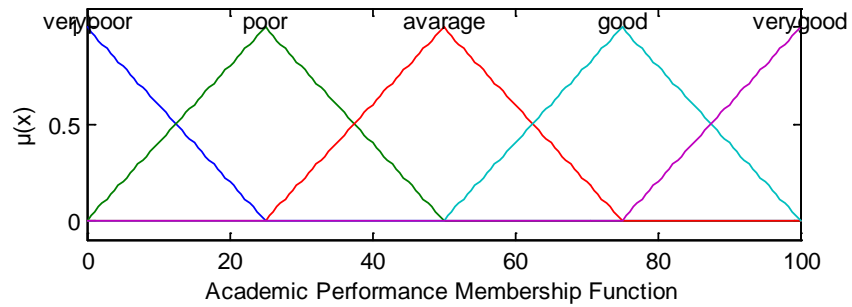
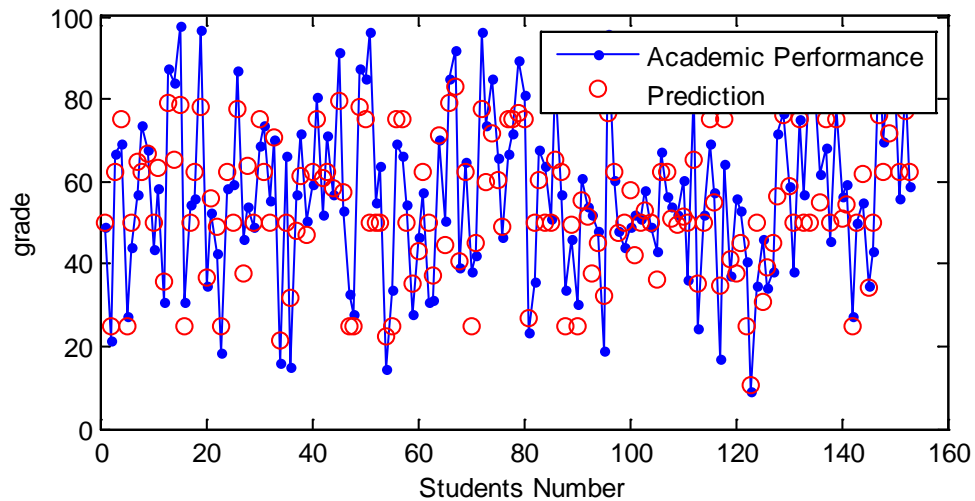


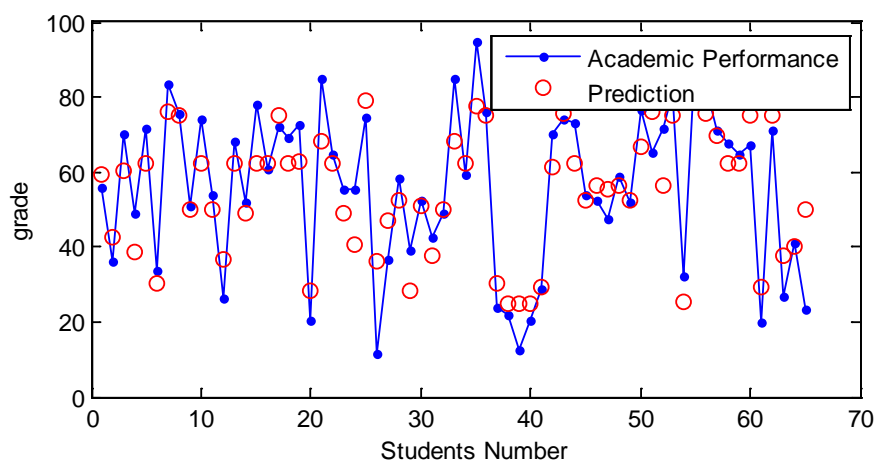
Figure 9. Academic performance membership function.

The following is a comparison graph for the results obtained by 70% random optimization. Iteration was operated 1000 times. In the end, 70% of the data, which were chosen randomly, had an accuracy rate of 82.5%.



Graph 3. Comparison graph for educational data.

The following is a comparison graph for the results obtained with the remaining 30% of the data. The accuracy rate for the 30% of the data was 81.11%.



Graph 4. Comparison graph for test data.

Table 3 presents the accuracy values for the three methods used in the study.

Table 3

*Accuracy Values for the Methods*

Model	Accuracy
Classic Fuzzy	72%
Expert Fuzzy	78%
Gene-Fuzzy	82,50%

The accuracy values for the predictions with the remaining 30% of the data are presented in Table 4.

Table 4

*Accuracy Value for Gene-Fuzzy Test Data*

Model	Accuracy
Gene-Fuzzy	81%

## Discussion

Some of the significant results of a survey on 2500 universities in the United States are as follows:

- 63% of the universities assert that distance education will have a prominent place in the years to come. This is a 3% increase compared to the previous year.
- The number of students who took at least one online course in the spring semester in 2009 is 5.6 million. This is an increase of approximately 1 million compared to the previous year (Allen & Seaman, 2013).

These results suggest that supply and demand for distance education is increasing at a breakneck pace. The characteristics of distance education compared to formal education, coupled with rapid advances in technical infrastructure, mean that the increase will be more and more significant. However, it is inevitable that the disadvantages of distance education will increase as well unless necessary precautions are taken. The present study reports results that are likely to prevent these disadvantages from increasing. Thanks to the study, both students and instructors will have a clear idea about the general situation and take necessary precautions in the middle of the semester.

## Limitations and Future Suggestions

The present study was conducted on distance students enrolled in Basic Computer Sciences. Further studies could focus on different courses and provide comparative results. The present study did not take the demographics of the participants into account. Further studies could build other models that also include demographics and present results in comparison with those of the present study. In addition, further studies could find intervals for fuzzy logic membership functions through clustering methods.

The model used in the present study can be adapted to the learning management system. In this way, it will be possible to predict distance education students' academic performance early during the semester on the basis of real-time data.

## Conclusion

The present study concludes that fuzzy logic systems enable one to validly predict a distance student's year-end academic performance on the basis of the first eight-week data. His/her year-end academic performance can be predicted in accordance with the data on how many days pass before he/she logs on to a class after it has been uploaded

to the system, how often he/she logs on to the class, how long he/she stays online in the class, how well he/she scores in the online quiz taken in Week 4, and how well he/she scores in the midterm exam taken in the classroom in Week 8. In this respect, the lowest result is provided by the classic fuzzy model. More accurate results are obtained from the fuzzy model that is based on expert opinion as well as the gene-fuzzy model, which is based on the optimization of the intervals for membership functions using genetic algorithm.

The best result is provided by the gene-fuzzy model, which is based on the optimization of the intervals for membership functions using genetic algorithm.

## References

- Allen, E., & Seaman, J. (2013). *Class differences: Online education in the United States (2010)*. Retrieved from [http://sloanconsortium.org/sites/default/files/class\\_differences.pdf](http://sloanconsortium.org/sites/default/files/class_differences.pdf)
- Brain Track (2013). *Online education continues rapid growth*. Retrieved from <http://www.braintrack.com/online-colleges/articles/online-education-continues-to-grow>
- Cordon, O., Herrera, F., Hoffmann, F., & Magdalena, L. (2001). *Genetic fuzzy systems*. Danvers: World Scientific.
- Haupt, R. L., & Haupt, S. E. (2004). *Practical genetic algorithms*. New Jersey: John Wiley & Sons.
- Keet, M. (2013, 04 16). *Genetic algorithms - An overview*. Retrieved from <http://www.metateck.org/gaover.html>
- Lykourantzou, I., Giannoukos, I., Mpardis, G., Nikolopoulos, V., & Loumos, V. (2009). Early and dynamic student achievement prediction in e-learning courses using neural networks. *JASIST*, 372-380.
- Lykourantzou, I., Giannoukos, I., Nikolopoulos, V., Mpardis, G., & Loumos, V. (2009). Dropout prediction in e-learning courses through the combination of machine learning techniques. *Computers & Education*, 950-965.
- Osofisan, P. B. (2013). *Fuzzy logic control of the syrup mixing process in beverage production*. Retrieved from [http://ljs.academicdirect.org/A11/093\\_108.htm](http://ljs.academicdirect.org/A11/093_108.htm)
- Moore, D., McCabe, G., & Craig, B. (2009). *Introduction to the practice of statistics*. New York: W. H. Freeman and Company.
- Simonson, M., Smaldino, S., Albright, M., & Zvacek, S. (2003). *Teaching and learning at a distance*. NJ: Pearson Education.
- Taylan, O., & Karagozoglu, B. (2009). An adaptive neuro-fuzzy model for prediction of student's academic performance. *Computers & Industrial Engineering*, 732-741.
- Valluru, R. (1995). *C++ neural networks and fuzzy logic*. M&T Books, IDG Books Worldwide.
- Vandamme, J. -P., Meskens, N., & Superby, J. -F. (2007). Predicting academic performance by data mining methods. *Education Economics*, s. 405-419.

Zafra, A., & Ventura, S. (2009). Predicting student grades in learning management systems with multiple instance genetic programming. *Educational Data Mining*, 307-314.

Athabasca University 

